

# SGCE antibody

Catalog Number: 115162

## Product name

SGCE antibody

## Specificity

Human, Mouse, Rat; other species not tested.

## Antibody description

SGCE Rabbit Polyclonal antibody. Positive IP detected in mouse heart tissue. Positive WB detected in mouse brain tissue, human brain tissue, human heart tissue, mouse heart tissue. Positive IF detected in HeLa cells. Observed molecular weight by Western-blot: 50 kDa

## Preparation

This antibody was obtained by immunization of SGCE recombinant protein (Accession Number: NM\_003919). Purification method: Antigen affinity purified.

## Formulation

PBS with 0.1% sodium azide and 50% glycerol pH 7.3.

## Storage

Store at -20°C. DO NOT ALIQUOT

## Clonality

Polyclonal

## Ig Type

Rabbit IgG

## Applications

ELISA, IF, WB, IP

## Dilutions

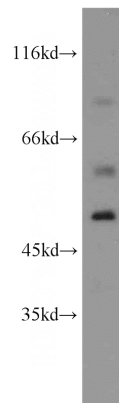
Recommended Dilution:


WB: 1:200-1:2000

IP: 1:200-1:2000

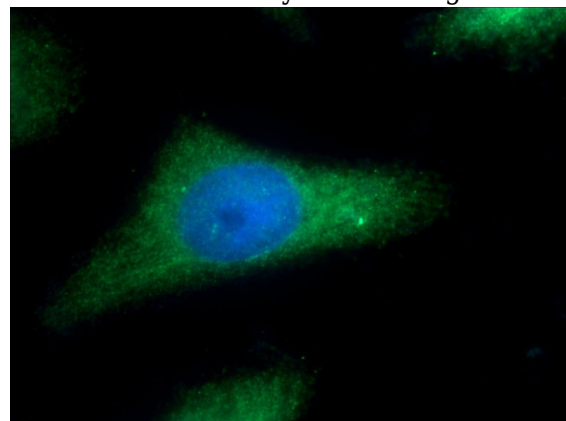
IF: 1:10-1:100

## Validations



mouse brain tissue were subjected to SDS PAGE followed by western blot with Catalog No:115162(SGCE antibody) at dilution of 1:500 

IP Result of anti-SGCE (IP:Catalog No:115162, 4ug; Detection:Catalog No:115162 1:500) with mouse heart tissue lysate 4000ug.



Immunofluorescent analysis of HeLa cells using Catalog No:115162(SGCE Antibody) at dilution of 1:25 and Alexa Fluor 488-conjugated AffiniPure Goat Anti-Rabbit IgG(H+L)