

# EAF2 antibody

Catalog Number: 110162

## Product name

EAF2 antibody

IHC: 1:20-1:200

IF: 1:20-1:200

## Specificity

Human, Mouse, Rat; other species not tested.

## Antibody description

EAF2 Rabbit Polyclonal antibody. Positive WB detected in mouse kidney tissue, Transfected HEK-293 cells. Positive IF detected in HepG2 cells. Positive IHC detected in human breast cancer tissue. Observed molecular weight by Western-blot: 45 kDa

## Preparation

This antibody was obtained by immunization of EAF2 recombinant protein (Accession Number: NM\_018456). Purification method: Antigen affinity purified.

## Formulation

PBS with 0.1% sodium azide and 50% glycerol pH 7.3.

## Storage

Store at -20°C. DO NOT ALIQUOT

## Clonality

Polyclonal

## Ig Type

Rabbit IgG

## Applications

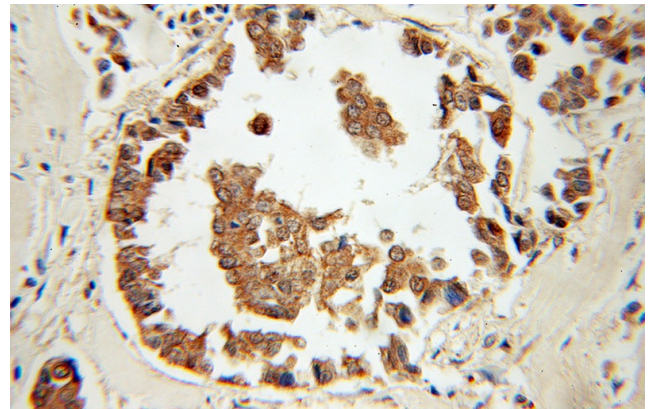
ELISA, IHC, WB, IF

## Dilutions

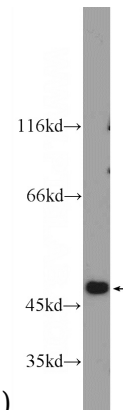
Recommended Dilution:

WB: 1:200-1:1000

## Validations

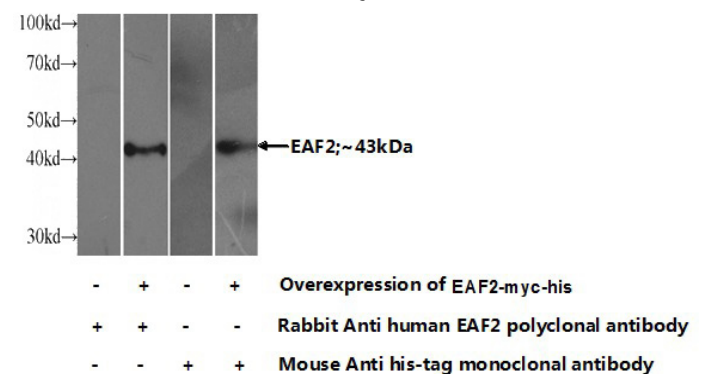


Immunohistochemical of paraffin-embedded human breast cancer using Catalog No:110162(EAF2 antibody) at dilution of 1:50



(under 10x lens)

mouse kidney tissue were subjected to SDS PAGE followed by western blot with Catalog No:110162(EAF2 Antibody) at dilution of 1:300



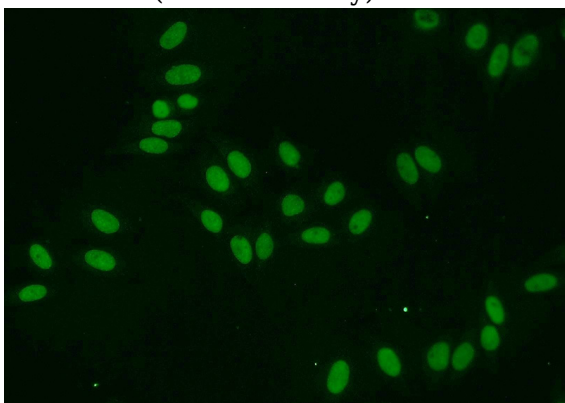
Transfected HEK-293 cells were subjected to SDS PAGE followed by western blot with Catalog

# EAF2 antibody

Catalog Number: 110162

---

No:110162(EAF2 Antibody) at dilution of 1:500



Immunofluorescent analysis of HepG2 cells using Catalog No:110162(EAF2 Antibody) at dilution of 1:50 and Alexa Fluor 488-conjugated AffiniPure Goat Anti-Rabbit IgG(H+L)