

# alpha Actin antibody



Catalog Number: 107862

## Product name

alpha Actin antibody

## Specificity

Human, Mouse, Rat; other species not tested.

## Antibody description

alpha Actin Rabbit Polyclonal antibody. Positive IF detected in HepG2 cells. Positive IHC detected in human colon tissue, human heart tissue, human skeletal muscle tissue. Positive WB detected in rat skeletal muscle tissue, mouse skeletal muscle tissue. Positive IP detected in mouse skeletal muscle tissue. Observed molecular weight by Western-blot: 40-42 kDa

## Preparation

This antibody was obtained by immunization of alpha Actin recombinant protein (Accession Number: NM\_001100). Purification method: Antigen Affinity purified.

## Formulation

PBS with 0.02% sodium azide and 50% glycerol pH 7.3.

## Storage

Store at -20°C. DO NOT ALIQUOT

## Clonality

Polyclonal

## Ig Type

Rabbit IgG

## Applications

ELISA, WB, IHC, IF, IP

## Dilutions

Recommended Dilution:

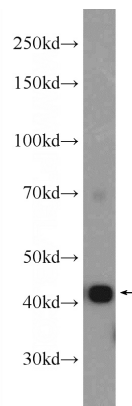
WB: 1:1000-1:10000

IP: 1:1000-1:10000

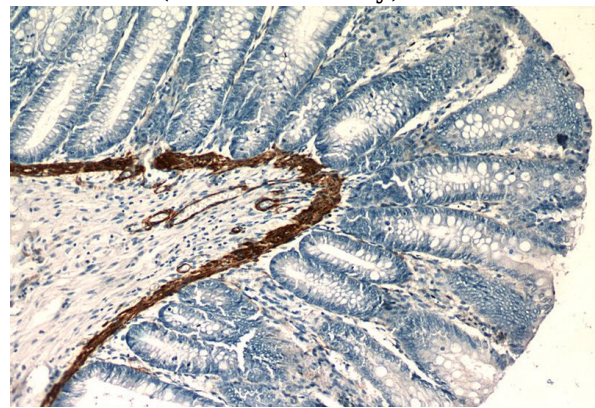
IHC: 1:20-1:200

IF: 1:20-1:200

## Validations



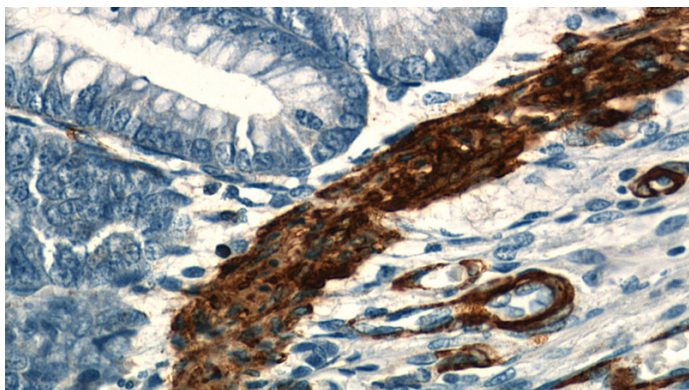
rat skeletal muscle tissue were subjected to SDS PAGE followed by western blot with Catalog No:107862(ACTA1 Antibody) at dilution of 1:4000



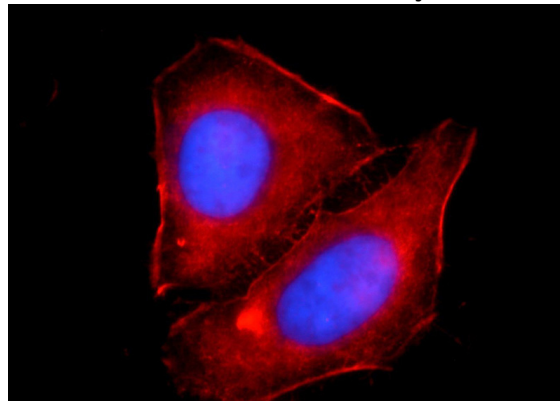
Immunohistochemistry of paraffin-embedded human colon slide using Catalog No:107862(ACTA1 Antibody) at dilution of 1:50

# alpha Actin antibody

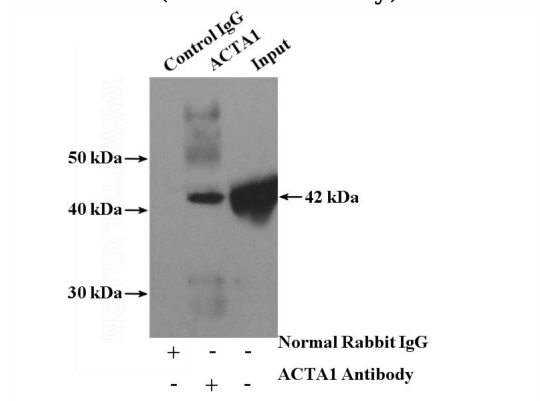
Catalog Number: 107862



IP Result of anti-ACTA1 (IP:Catalog No:107862, 4ug; Detection:Catalog No:107862 1:4000) with mouse skeletal muscle tissue lysate 2200ug.



Immunohistochemistry of paraffin-embedded human colon slide using Catalog No:107862(ACTA1 Antibody) at dilution of 1:50



Immunofluorescent analysis of HepG2 cells using Catalog No:107862(ACTA1 Antibody) at dilution of 1:50 and Rhodamine-Goat anti-Rabbit IgG