

WDR32 antibody

Catalog Number: 116862

Product name

WDR32 antibody

IP: 1:200-1:1000

IHC: 1:20-1:200

Specificity

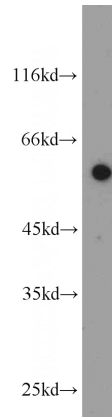
Human, Mouse, Rat; other species not tested.

IF: 1:20-1:200

Antibody description

WDR32 Rabbit Polyclonal antibody. Positive IHC detected in human testis tissue, human kidney tissue. Positive IF detected in HepG2 cells. Positive IP detected in HepG2 cells. Positive WB detected in HeLa cells, HepG2 cells. Observed molecular weight by Western-blot: 61kd

Validations



Preparation

This antibody was obtained by immunization of WDR32 recombinant protein (Accession Number: BC003520). Purification method: Antigen affinity purified.

HeLa cells were subjected to SDS PAGE followed by western blot with Catalog No:116862(WDR32 antibody) at dilution of 1:800

Formulation

PBS with 0.02% sodium azide and 50% glycerol pH 7.3.

Storage

Store at -20°C. DO NOT ALIQUOT

Clonality

Polyclonal

Ig Type

Rabbit IgG

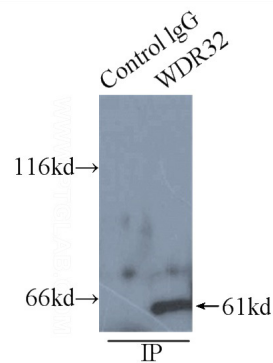
Applications

ELISA, IHC, IP, WB, IF

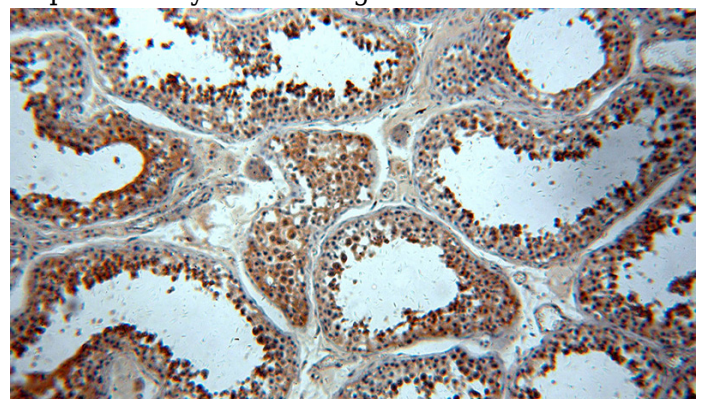
Dilutions

Recommended Dilution:

WB: 1:200-1:2000



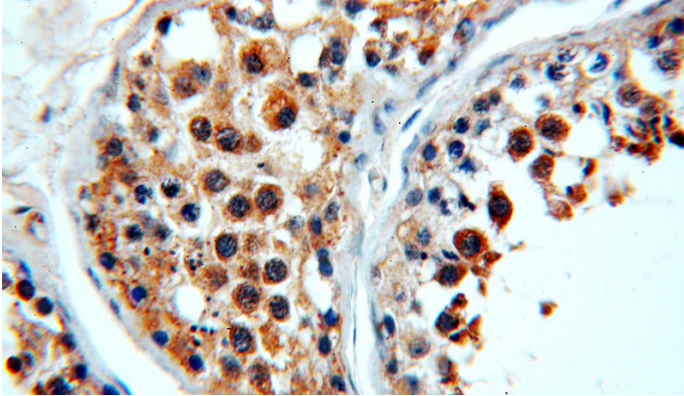
IP Result of anti-WDR32 (IP:Catalog No:116862, 4ug; Detection:Catalog No:116862 1:300) with HepG2 cells lysate 6000ug.



WDR32 antibody

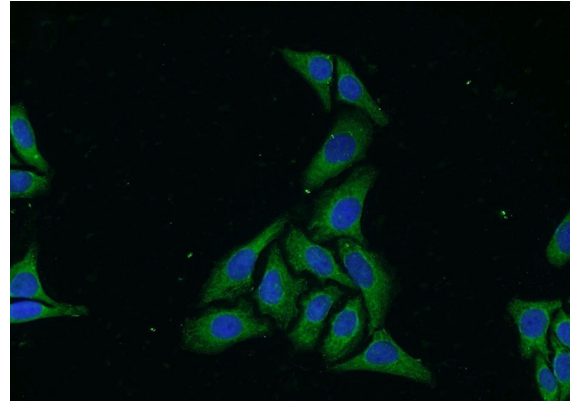
Catalog Number: 116862

Immunohistochemical of paraffin-embedded human testis using Catalog No:116862(WDR32 antibody) at dilution of 1:100 (under 10x lens)



Immunohistochemical of paraffin-embedded human testis using Catalog No:116862(WDR32

antibody) at dilution of 1:100 (under 40x lens)



Immunofluorescent analysis of HepG2 cells using Catalog No:116862(WDR32 Antibody) at dilution of 1:50 and Alexa Fluor 488-conjugated AffiniPure Goat Anti-Rabbit IgG(H+L)