

# Anti-p21 Rabbit antibody



Catalog Number: 166862

## Product name

Anti-p21 Rabbit antibody

## Specificity

Human, Mouse

## Antibody description

p21 Rabbit polyclonal antibody

## Preparation

Antigen: A synthetic peptide of human p21

## Formulation

Supplied in 50nM Tris-Glycine(pH 7.4), 0.15M NaCl, 40%Glycerol, 0.01% sodium azide and 0.05% BSA.

## Storage

Store at -20°C. Stable for 12 months from date of receipt.

## Clonality

Polyclonal

## Ig Type

Rabbit IgG

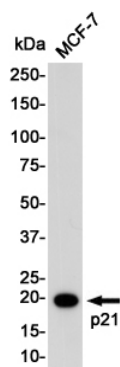
## Applications

WB

## Dilutions

WB: 1/1000

## Validations



Western blot detection of p21 in MCF-7 cell lysates using p21 Rabbit pAb(1:1000 diluted). Predicted band size:18KDa. Observed band size:21KDa.