

# MRRF antibody



Catalog Number: 112862

## Product name

MRRF antibody

IHC: 1:20-1:200

IF: 1:20-1:200

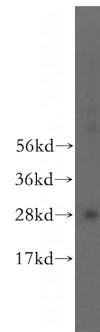
## Specificity

Human, Mouse, Rat; other species not tested.

## Validations

## Antibody description

MRRF Rabbit Polyclonal antibody. Positive IHC detected in human pancreas cancer tissue. Positive IF detected in MCF-7 cells. Positive WB detected in human lung tissue. Observed molecular weight by Western-blot: 29kd



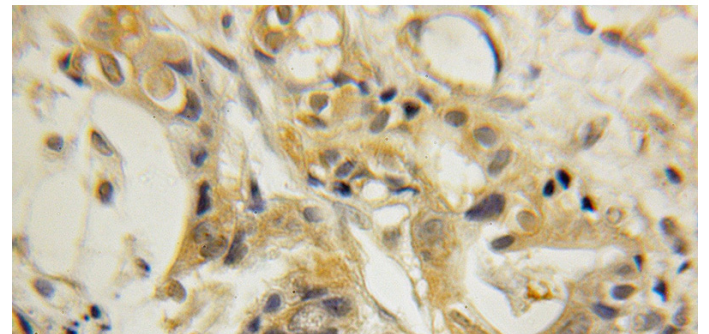
## Preparation

This antibody was obtained by immunization of MRRF recombinant protein (Accession Number: NM\_138777). Purification method: Antigen affinity purified.

human lung tissue were subjected to SDS PAGE followed by western blot with Catalog No:112862(MRRF antibody) at dilution of 1:500

## Formulation

PBS with 0.1% sodium azide and 50% glycerol pH 7.3.



## Storage

Store at -20°C. DO NOT ALIQUOT

## Clonality

Polyclonal

Immunohistochemical of paraffin-embedded human pancreas cancer using Catalog No:112862(MRRF antibody) at dilution of 1:50 (under 10x lens)

## Ig Type

Rabbit IgG

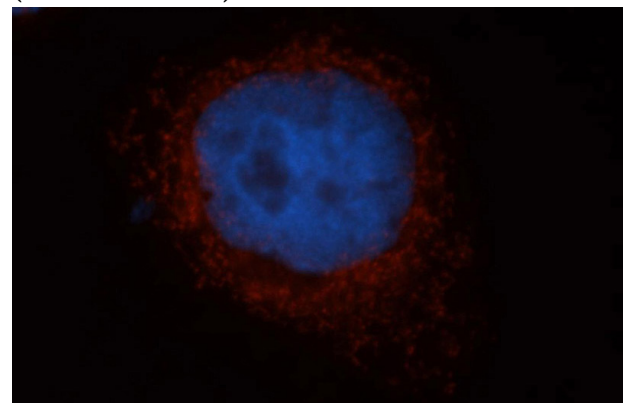
## Applications

ELISA, WB, IHC, IF

## Dilutions

Recommended Dilution:

WB: 1:200-1:2000



Immunofluorescent analysis of MCF-7 cells, using

# MRRF antibody



Catalog Number: 112862

---

MRRF antibody Catalog No:112862 at 1:50  
dilution and Rhodamine-labeled goat anti-rabbit

IgG (red). Blue pseudocolor = DAPI (fluorescent  
DNA dye).