

Mouse CL-K1/COLEC11 (His Tag) recombinant protein



Catalog Number: 502862

General Information

Gene Name Synonym

Collectin kidney protein 1

Protein Construction

A DNA sequence encoding the mouse COLEC11 (Q3SXB8-1) (Met1-Leu272) was expressed with a C-terminal polyhistidine tag.

Organism

Mouse

Expression Host

Baculovirus-Insect Cells

QC Testing

Purity

> 95 % as determined by SDS-PAGE

Endotoxin

< 1.0 EU per μg of the protein as determined by the LAL method

Stability

Samples are stable for up to twelve months from date of receipt at -70°C

Predicted N terminal

Gln 27

Molecular Mass

The recombinant mouse COLEC11 comprises 256

amino acids and has a predicted molecular mass of 27.6 kDa. The apparent molecular mass of the protein is approximately 33-37 kDa in SDS-PAGE under reducing conditions.

Formulation

Lyophilized from sterile 20mM Tris, 500mM NaCl, 10% glycerol, pH 7.4.

1. 5 % trehalose and mannitol are added as protectants before lyophilization.
2. Please contact us for any concerns or special requirements.

Usage Guide

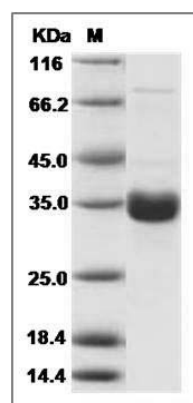
Storage

Store it under sterile conditions at -20°C to -80°C . It is recommended that the protein be aliquoted for optimal storage. Avoid repeated freeze-thaw cycles.

Reconstitution

Adding sterile water, prepare a stock solution of 0.25 mg/ml. Concentration is measured by UV-Vis.

SDS-PAGE



Mouse CL-K1 / COLEC11 Protein (His Tag) SDS-PAGE