

Anti-SUV39H2 antibody



Catalog Number: 141862

Product name

Anti-SUV39H2 antibody

Specificity

Human SUV39H2

Antibody description

Rabbit Polyclonal to Human SUV39H2

Preparation

Produced in rabbits immunized with a synthetic peptide corresponding to the center region of the Human SUV39H2. The IgG fraction of the cell culture supernatant was purified by Protein A affinity chromatography.

Formulation

0.2 μ m filtered solution in PBS

Storage

This antibody can be stored at 2°C-8°C for one month without detectable loss of activity. Antibody products are stable for twelve months from date of receipt when stored at -20°C to -80°C.

Preservative-Free.

Sodium azide is recommended to avoid contamination (final concentration 0.05%-0.1%). It is toxic to cells and should be disposed of properly. Avoid repeated freeze-thaw cycles.

Clonality

Polyclonal

Ig Type

Rabbit IgG

Applications

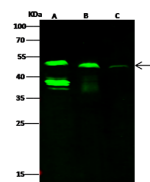
WB, ICC/IF, IF

Dilutions

WB: 5-20 μ g/ml

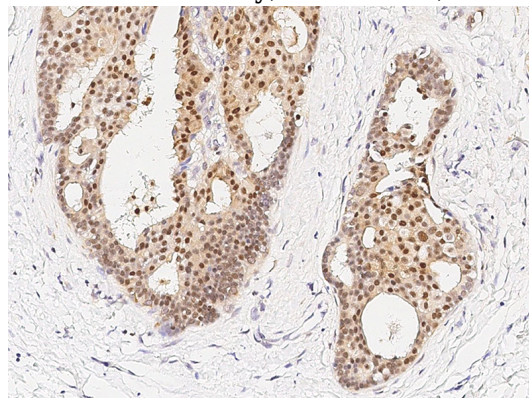
ICC/IF: 0.5-3 μ g/mL

Validations

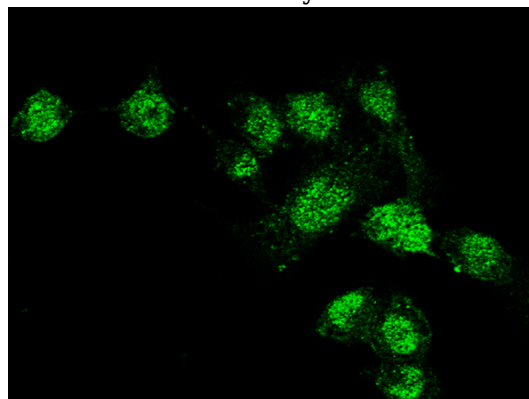


| Lanes | A | B | C |
|----------------------------------|--|-----------------------------|-------------------------------|
| Items | | | |
| Sample | HepG2 (whole cell lysate) | MCF7 (whole cell lysate) | Mouse kidney tissue lysate |
| Sample Volume (μ g/lane) | 30 | 30 | 30 |
| Gel | 13% SDS-PAGE reducing gel | | |
| Recommended Concentration | 5-20 μ g/ml | | |
| Secondary Antibody | Dylight 800 labeled Antibody to Rabbit IgG (H+L), at 1:5000 dilution. | | |
| Explanation | Developed using Odyssey imaging system. Predicted band size : 47 kDa Observed band size : 47 kDa Additional bands at : 38 kDa (We are unsure as to the identity of these extra bands.) | | |

SUV39H2 Antibody, Rabbit PAb, Western blot



SUV39H2 Antibody, Rabbit PAb, Immunohistochemistry



SUV39H2 Antibody, Rabbit PAb, Immunofluorescence