

# COPS2/TRIP15 antibody



Catalog Number: 109462

## Product name

COPS2/TRIP15 antibody

## Immunogen

[Human COPS2 Recombinant protein \(GST tag\)](#)

## Specificity

Human, Mouse; other species not tested.

## Antibody description

COPS2/TRIP15 Rabbit Polyclonal antibody. Positive IP detected in NIH/3T3 cells. Positive WB detected in HeLa cells, human brain tissue, mouse brain tissue, mouse skeletal muscle tissue, NIH/3T3 cells. Positive IHC detected in human ovary tumor tissue. Positive IF detected in HeLa cells. Observed molecular weight by Western-blot: 52 kDa

## Preparation

This antibody was obtained by immunization of COPS2/TRIP15 recombinant protein (Accession Number: NM\_004236). Purification method: Antigen affinity purified.

## Formulation

PBS with 0.1% sodium azide and 50% glycerol pH 7.3.

## Storage

Store at -20°C. DO NOT ALIQUOT

## Clonality

Polyclonal

## Ig Type

Rabbit IgG

## Applications

ELISA, IHC, IF, IP, WB

## Dilutions

Recommended Dilution:

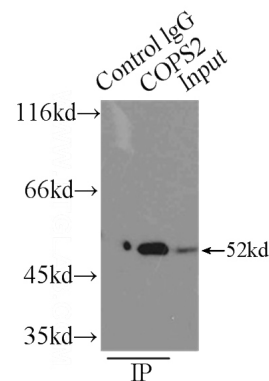
WB: 1:200-1:2000

IP: 1:200-1:2000

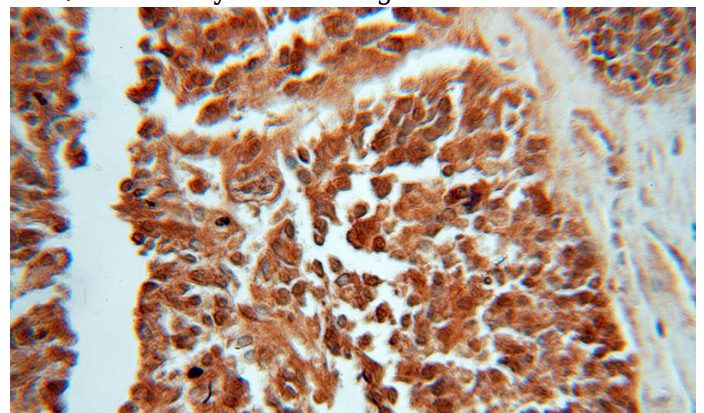
IHC: 1:20-1:200

IF: 1:10-1:100

## Validations



IP Result of anti-COPS2 (IP:Catalog No:109462, 3ug; Detection:Catalog No:109462 1:500) with NIH/3T3 cells lysate 2500ug.



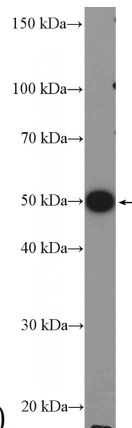
Immunohistochemical of paraffin-embedded human ovary tumor using Catalog No:109462(COPS2 antibody) at dilution of 1:50

# COPS2/TRIP15 antibody

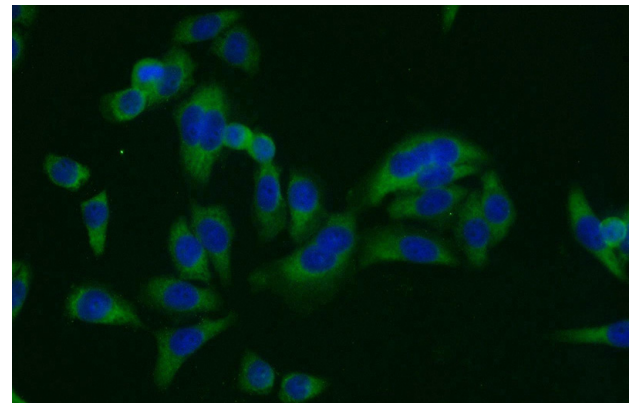


Catalog Number: 109462

---



(under 10x lens)



Immunofluorescent analysis of HeLa cells using Catalog No:109462(COPS2 Antibody) at dilution of 1:25 and Alexa Fluor 488-conjugated AffiniPure Goat Anti-Rabbit IgG(H+L)

HeLa cells were subjected to SDS PAGE followed by western blot with Catalog No:109462(COPS2 Antibody) at dilution of 1:600