

Anti-Glypican 3/GPC3/OCI-5 antibody



Catalog Number: 105462

Product name

Anti-Glypican 3/GPC3/OCI-5 antibody

Specificity

Human Glypican 3 / GPC3 / OCI-5

Antibody description

Rabbit polyclonal to Glypican 3/GPC3/OCI-5

Preparation

Produced in rabbits immunized with a synthetic peptide corresponding to the center region of the Human Glypican 3 / GPC3 / OCI-5, and purified by antigen affinity chromatography.

Formulation

0.2 µm filtered solution in PBS

Storage

This antibody can be stored at 2°C-8°C for one month without detectable loss of activity. Antibody products are stable for twelve months from date of receipt when stored at -20°C to -80°C.

Preservative-Free.

Sodium azide is recommended to avoid contamination (final concentration 0.05%-0.1%). It is toxic to cells and should be disposed of properly. Avoid repeated freeze-thaw cycles.

Clonality

Polyclonal

Ig Type

Rabbit IgG

Applications

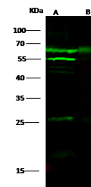
WB, IP

Dilutions

WB: 10-20 µg/ml

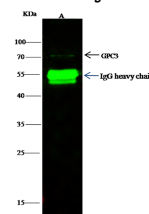
IP: 1-4 uL/mg of lysate

Validations



Lanes	A	B
Items		
Sample (whole cell lysate)	HepG2	293
Sample Volume (µg/Lane)	30	30
Gel	13% SDS-PAGE reducing gel	
Recommended Concentration	10-20µg/ml	
Secondary Antibody	Dylight 800 labeled Antibody to Rabbit IgG (H+L), at 1:5000 dilution.	
Explanation	Developed using Odyssey imaging system. Predicted band size : 66 kDa Observed band size : 66 kDa Additional bands at : 55 kDa and 25 kDa (We are unsure as to the identity of these extra bands.)	

Glypican 3 / GPC3 / OCI-5 Antibody, Rabbit PAb, Antigen Affinity Purified, Western blot



Lanes	A
Items	
Sample (whole cell lysate)	HepG2
Sample quantity	0.5 mg
IP antibody quantity	2 µg
Immunoprecipitate beads Protein G	60 µg
Gel	13% SDS-PAGE reducing gel
Primary antibody	KL18-SMCC-SINO(A393) antibody at 10 µg/ml
Secondary antibody	Dylight 800-labeled antibody to rabbit IgG (H+L), at 1:5000 dilution

Glypican 3 / GPC3 / OCI-5 Antibody, Rabbit PAb, Antigen Affinity Purified, Immunoprecipitation