

# GLUD1 Polyclonal Antibody



Catalog Number: 165462

## Product name

GLUD1 Polyclonal Antibody

## Specificity

Human, Mouse, Rat

## Antibody description

Polyclonal antibody to GLUD1

## Preparation

Antigen: Recombinant fusion protein containing a sequence corresponding to amino acids 54-240 of human GLUD1 (NP\_005262.1).

## Formulation

PBS with 0.02% sodium azide, 50% glycerol, pH7.3.

## Storage

Store at -20°C. Avoid freeze / thaw cycles.

## Clonality

Polyclonal

## Ig Type

Rabbit IgG

## Applications

WB, IHC, IF

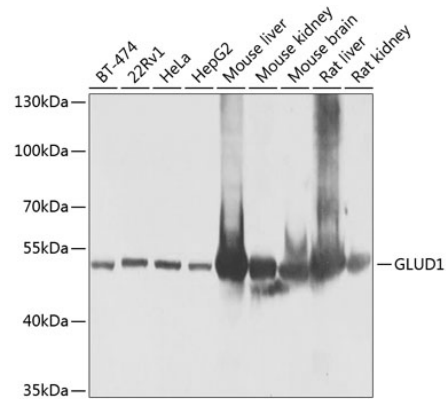
## Dilutions

WB 1:500 - 1:2000

IHC 1:100 - 1:200

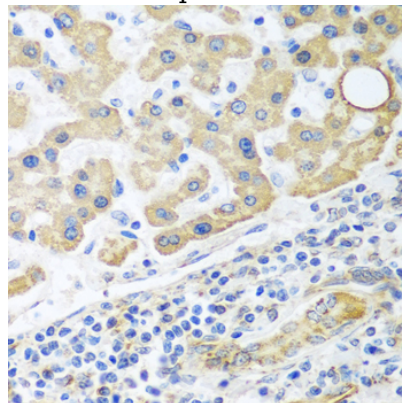
IF 1:50 - 1:200

## Validations



Western blot - GLUD1 Polyclonal Antibody

Western blot analysis of extracts of various cell lines, using GLUD1 antibody at 1:1000 dilution. Secondary antibody: HRP Goat Anti-Rabbit IgG (H+L) at 1:10000 dilution. Lysates/proteins: 25ug per lane. Blocking buffer: 3% nonfat dry milk in TBST. Detection: ECL Basic Kit. Exposure time: 20s.



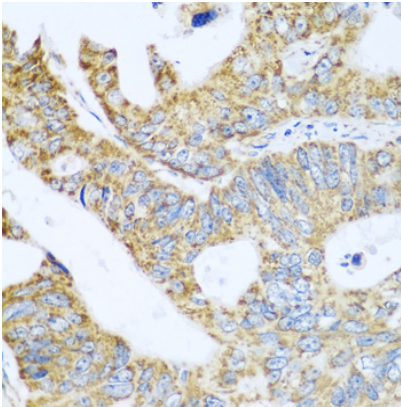
Immunohistochemistry - GLUD1 Polyclonal Antibody

Immunohistochemistry of paraffin-embedded human liver cancer using GLUD1 antibody at dilution of 1:100 (40x lens).

# GLUD1 Polyclonal Antibody

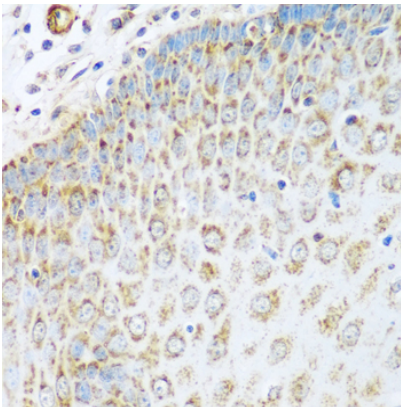


Catalog Number: 165462



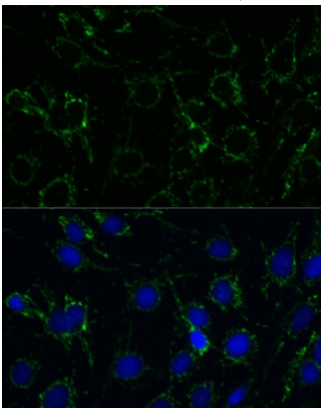
Immunohistochemistry - GLUD1 Polyclonal Antibody

Immunohistochemistry of paraffin-embedded human colon carcinoma using GLUD1 antibody at dilution of 1:100 (40x lens).



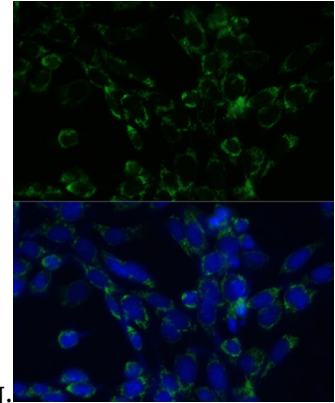
Immunohistochemistry - GLUD1 Polyclonal Antibody

Immunohistochemistry of paraffin-embedded human esophagus using GLUD1 antibody at dilution of 1:100 (40x lens).



Immunofluorescence - GLUD1 Polyclonal Antibody

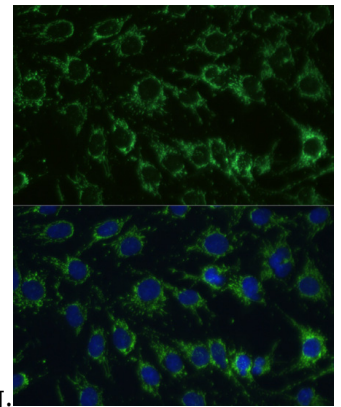
Immunofluorescence analysis of C6 cells using GLUD1 antibody at dilution of 1:100. Blue: DAPI



for nuclear staining.

Immunofluorescence - GLUD1 Polyclonal Antibody

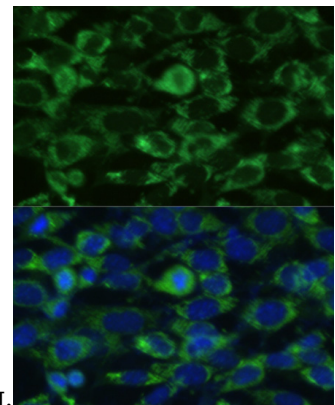
Immunofluorescence analysis of NIH-3T3 cells using GLUD1 antibody at dilution of 1:100. Blue:



DAPI for nuclear staining.

Immunofluorescence - GLUD1 Polyclonal Antibody

Immunofluorescence analysis of C6 cells using GLUD1 antibody at dilution of 1:100. Blue: DAPI



for nuclear staining.

Immunofluorescence - GLUD1 Polyclonal Antibody

Immunofluorescence analysis of NIH-3T3 cells

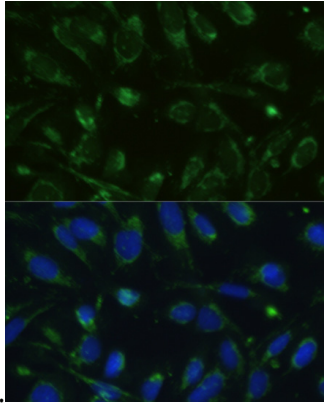
# GLUD1 Polyclonal Antibody



Catalog Number: 165462

---

using GLUD1 antibody at dilution of 1:100. Blue:



DAPI for nuclear staining.

Immunofluorescence - GLUD1 Polyclonal Antibody

Immunofluorescence analysis of U-2 OS cells using GLUD1 antibody at dilution of 1:100. Blue: DAPI for nuclear staining.