

Anti-SCF/C-kit ligand antibody



Catalog Number: 101462

Product name

Anti-SCF/C-kit ligand antibody

Immunogen

[Human SCF/C-kit ligand \(aa 1-189, His Tag\) recombinant protein](#)

Specificity

Human SCF / C-kit ligand

Antibody description

Rabbit polyclonal to SCF/C-kit ligand

Preparation

Produced in rabbits immunized with purified, recombinant Human SCF / C-kit ligand (rh SCF / C-kit ligand; P21583-1; Met1-Ala189). SCF / C-kit ligand specific IgG was purified by Human SCF / C-kit ligand affinity chromatography.

Formulation

0.2 µm filtered solution in PBS

Storage

This antibody can be stored at 2°C-8°C for one month without detectable loss of activity. Antibody products are stable for twelve months from date of receipt when stored at -20°C to -80°C.

Preservative-Free.

Sodium azide is recommended to avoid contamination (final concentration 0.05%-0.1%). It is toxic to cells and should be disposed of

properly. Avoid repeated freeze-thaw cycles.

Clonality

Polyclonal

Ig Type

Rabbit IgG

Applications

ELISA, WB

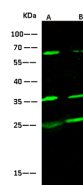
Dilutions

WB: 10-20 µg/mL

ELISA: 0.1-0.2 µg/mL

This antibody can be used at 0.1-0.2 µg/mL with the appropriate secondary reagents to detect Human SCF / C-kit ligand. The detection limit for Human SCF / C-kit ligand is < 0.039 ng/well.

Validations



Items	Lanes	A	B
Sample (whole cell lysate)		HepG2	A549
Sample Volume (µg/lane)		30	30
Gel	13% SDS-PAGE reducing gel		
Recommended Concentration		10-20 µg/ml	
Secondary Antibody		Dylight 800-labeled Antibody To Rabbit IgG (H+L), at 1:5000 dilution.	
Explanation	Developed using Odyssey imaging system. Predicted band size : 31 kDa Observed band size : 31 kDa Additional bands at : 65 kDa and 25 kDa (We are unsure as to the identity of these extra bands. They are possible non-specific bindings).		

SCF / C-kit ligand Antibody, Rabbit PAb, Antigen Affinity Purified, Western blot