

Anti-AMH (Center) Rabbit antibody



Catalog Number: 169062

Product name

Anti-AMH (Center) Rabbit antibody

Specificity

Human, Mouse

Antibody description

AMH (Center) Rabbit polyclonal antibody

Preparation

Antigen: This AMH antibody is generated from rabbits immunized with a KLH conjugated synthetic peptide between 424-451 amino acids from the Central region of human AMH.

Formulation

Purified polyclonal antibody supplied in PBS with 0.09% (W/V) sodium azide. This antibody is purified through a protein A column, followed by peptide affinity purification.

Clonality

Polyclonal

Ig Type

Rabbit IgG

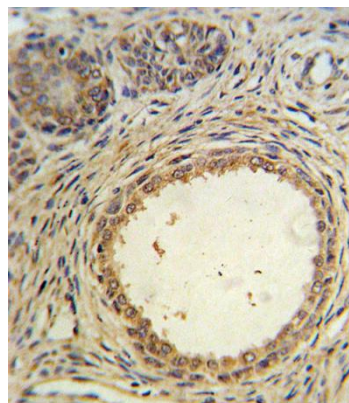
Applications

WB, FC, IHC-P

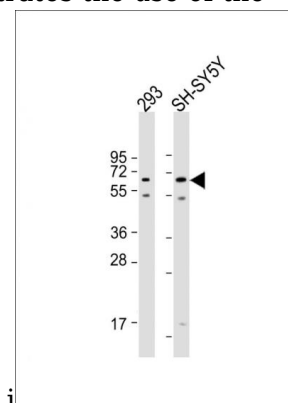
Dilutions

WB::1:2000 IHC::1:10~50 FCM::1:10~50

Validations

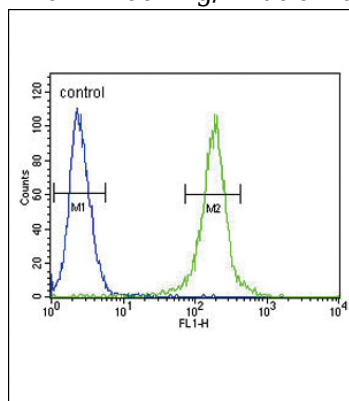


AMH Antibody (Center) (Cat. #169062) IHC analysis in formalin fixed and paraffin embedded prostate carcinoma followed by peroxidase conjugation of the secondary antibody and DAB staining. This data demonstrates the use of the



AMH Antibody (Center) for i

All lanes: Anti-AMH Antibody (Center) at 1:2000 dilution
Lane 1: 293 whole cell lysate
Lane 2: SH-SY5Y whole cell lysate
Lysates/proteins at 20 µg per lane.
Secondary: Goat Anti-Rabbit IgG, (H+L), Peroxidase conjugated at 1/10000 dilution.
Predicted band size: 59 kDa
Blocking/Dilution buffer: 5% NFDM/TBST.



AMH Antibody (Center) (Cat. #169062) flow

Anti-AMH (Center) Rabbit antibody



Catalog Number: 169062

cytometric analysis of 293 cells (right histogram)
compared to a negative control cell (left

histogram).FITC-conjugated goat-anti-rabbit
secondary antibodies were used for the analysis.