

# KIR3DL1 antibody



Catalog Number: 112062

## Product name

KIR3DL1 antibody

## Specificity

Human; other species not tested.

## Antibody description

KIR3DL1 Rabbit Polyclonal antibody. Positive FC detected in Jurkat cells. Positive WB detected in human liver tissue. Observed molecular weight by Western-blot: 49 kDa

## Preparation

This antibody was obtained by immunization of KIR3DL1 recombinant protein (Accession Number: NM\_013289). Purification method: Antigen affinity purified.

## Formulation

PBS with 0.02% sodium azide and 50% glycerol pH 7.3.

## Storage

Store at -20°C. DO NOT ALIQUOT

## Clonality

Polyclonal

## Ig Type

Rabbit IgG

## Applications

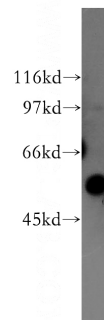
ELISA, WB, FC

## Dilutions

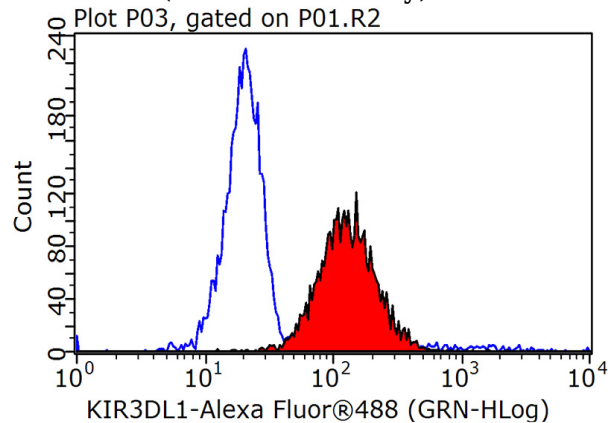
Recommended Dilution:

WB: 1:200-1:2000

## Validations



human liver tissue were subjected to SDS PAGE followed by western blot with Catalog No:112062(KIR3DL1 antibody) at dilution of 1:500



1X10<sup>6</sup> Jurkat cells were stained with 0.2ug KIR3DL1 antibody (Catalog No:112062, red) and control antibody (blue). Fixed with 90% MeOH blocked with 3% BSA (30 min). Alexa Fluor 488-conjugated AffiniPure Goat Anti-Rabbit IgG(H+L) with dilution 1:1000.