

# Human REG3G (His Tag) recombinant protein



Catalog Number: 500062

## General Information

### Gene Name Synonym

Pancreatitis-associated protein 1B; Pancreatitis-associated protein 1B; Regenerating islet-derived protein III-gamma; Regenerating islet-derived protein 3-gamma 16.5 kDa form; Regenerating islet-derived protein 3-gamma 15 kDa form

### Protein Construction

A DNA sequence encoding the human REG3G (NP\_001008388.1) (Met 1-Asp 175) was fused with a polyhistidine tag at the C-terminus.

### Organism

Human

### Expression Host

Human Cells

## QC Testing

### Purity

> 97 % as determined by SDS-PAGE

### Endotoxin

< 1.0 EU per  $\mu\text{g}$  of the protein as determined by the LAL method

### Stability

Samples are stable for up to twelve months from date of receipt at  $-70^{\circ}\text{C}$

### Predicted N terminal

Glu 27

### Molecular Mass

The recombinant human REG3G consists of 160 amino acids and migrates as an approximately 18 kDa band in SDS-PAGE under reducing conditions as predicted.

### Formulation

Lyophilized from sterile PBS, pH 7.4

1. 5 % trehalose and mannitol are added as protectants before lyophilization.

2. Please contact us for any concerns or special requirements.

## Usage Guide

### Storage

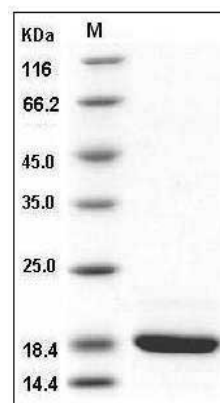
Store it under sterile conditions at  $-20^{\circ}\text{C}$  to  $-80^{\circ}\text{C}$ .

It is recommended that the protein be aliquoted for optimal storage. Avoid repeated freeze-thaw cycles.

### Reconstitution

Adding sterile water, prepare a stock solution of 0.25 mg/ml. Concentration is measured by UV-Vis.

### SDS-PAGE



Human REG3G / PAP1B Protein (His Tag) SDS-PAGE