

# Anti-NXF1 Rabbit antibody



Catalog Number: 168752

## Product name

Rabbit IgG

Anti-NXF1 Rabbit antibody

## Applications

## Specificity

WB, IHC-P, ICC/IF, IP

Human

## Dilutions

## Antibody description

1:1000

NXF1 Rabbit monoclonal antibody

1:50

## Preparation

1:50

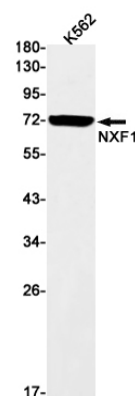
Antigen: A synthetic peptide of human NXF1

1:20

## Formulation

Supplied in 50nM Tris-Glycine(pH 7.4), 0.15M NaCl, 40%Glycerol, 0.01% sodium azide and 0.05% BSA.

## Validations



## Storage

Store at 4°C short term. Aliquot and store at -20°C long term. Avoid freeze / thaw cycle.

Western blot detection of NXF1 in K562 cell lysates using NXF1 Rabbit mAb(1:1000 diluted).Predicted band size:70kDa.Observed band size:70kDa.

## Clonality

Monoclonal

## Ig Type