

# Anti-MCM2 (2B5) Mouse antibody



Catalog Number: 168352

## Product name

Anti-MCM2 (2B5) Mouse antibody

## Specificity

Human

## Antibody description

MCM2 (2B5) Mouse monoclonal antibody

## Preparation

Antigen: Purified recombinant fragment of human MCM2 expressed in E. Coli.

## Formulation

Ascitic fluid containing 0.03% sodium azide.

## Storage

Store at 4°C short term. Store at -20°C long term. Avoid freeze / thaw cycle.

## Clonality

Monoclonal

## Ig Type

Mouse IgG1

## Applications

WB, IHC-P, ICC/IF, FC, IP

## Dilutions

WB: 1/500 - 1/2000

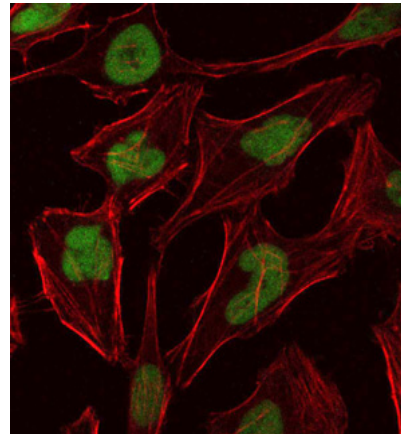
IHC: 1/200 - 1/1000

ICC: 1/200 - 1/1000

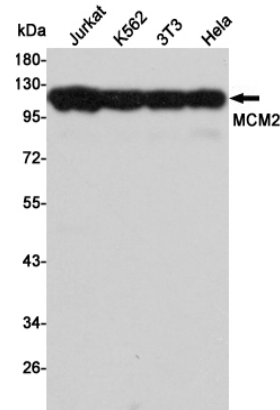
FC: 1/200 - 1/400

ELISA: 1/10000

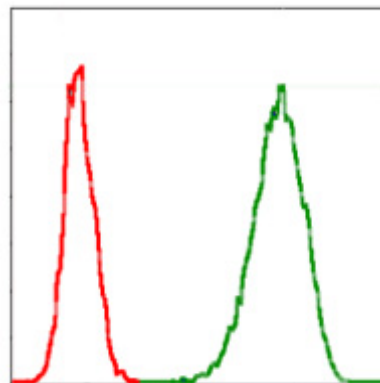
## Validations



Immunofluorescence analysis of HeLa cells using MCM2 mouse mAb (green). Blue



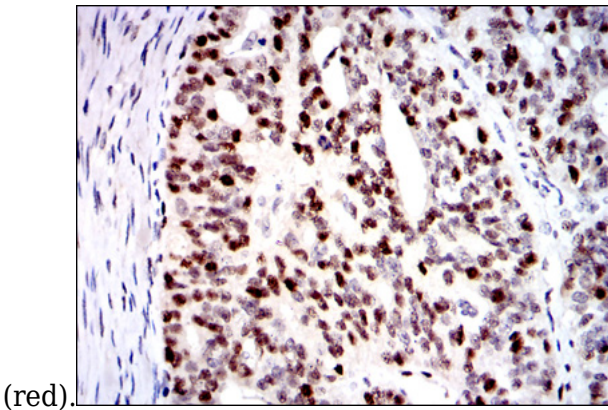
Western blot detection of MCM2 in Jurkat, K562, 3T3 and HeLa cell lysates using MCM2 mouse mAb (1:3000 diluted). Predicted band size: 125KDa. Observed band size: 125KDa.



Flow cytometric analysis of Jurkat cells using MCM2 mouse mAb (green) and negative control

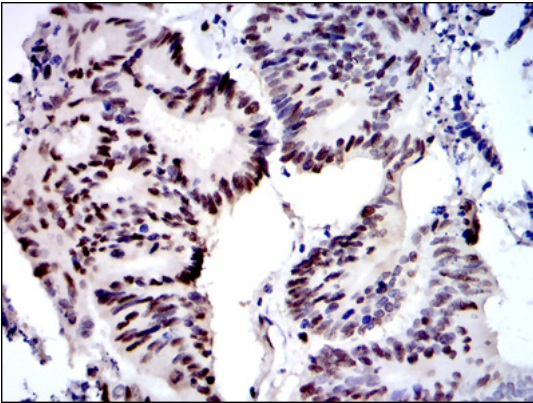
# Anti-MCM2 (2B5) Mouse antibody

Catalog Number: 168352

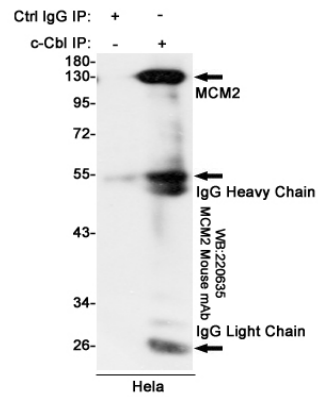


(red).

Immunohistochemical analysis of paraffin-embedded ovarian cancer tissues using MCM2 mouse mAb with DAB staining.



Immunohistochemical analysis of paraffin-embedded colon cancer tissues using MCM2 mouse mAb with DAB staining.



Immunoprecipitation analysis of HeLa cell lysates using MCM2 mouse mAb.