

OPLAH antibody

Catalog Number: 113352

Product name

OPLAH antibody

Specificity

Human, Mouse, Rat; other species not tested.

Antibody description

OPLAH Rabbit Polyclonal antibody. Positive IHC detected in human prostate cancer tissue. Positive WB detected in mouse brain tissue, L02 cells, mouse bladder tissue. Observed molecular weight by Western-blot: 135-140 kDa

Preparation

This antibody was obtained by immunization of OPLAH recombinant protein (Accession Number: NM_017570). Purification method: Antigen affinity purified.

Formulation

PBS with 0.02% sodium azide and 50% glycerol pH 7.3.

Storage

Store at -20°C. DO NOT ALIQUOT

Clonality

Polyclonal

Ig Type

Rabbit IgG

Applications

ELISA, WB, IHC

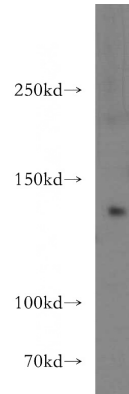
Dilutions

Recommended Dilution:

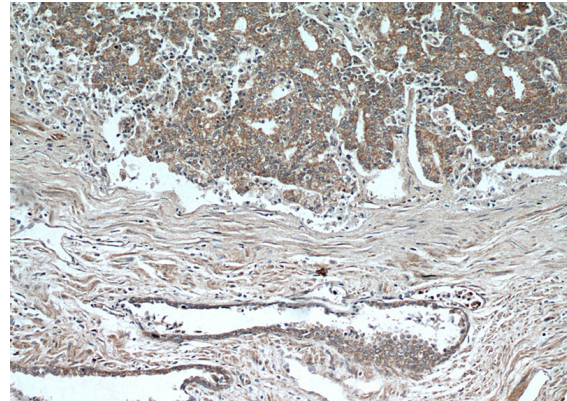
WB: 1:200-1:2000

IHC: 1:20-1:200

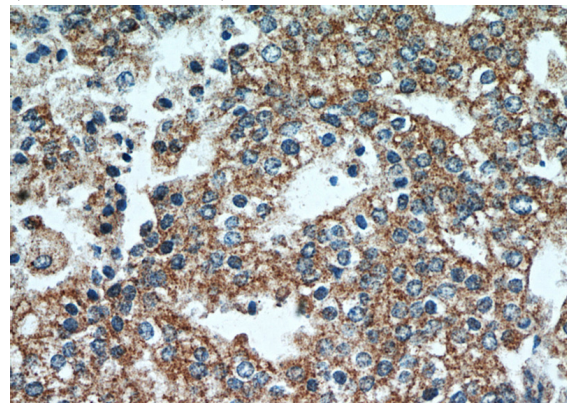
Validations



mouse brain tissue were subjected to SDS PAGE followed by western blot with Catalog No:113352(OPLAH antibody) at dilution of 1:300



Immunohistochemical of paraffin-embedded human prostate cancer using Catalog No:113352(OPLAH antibody) at dilution of 1:50 (under 10x lens)



Immunohistochemical of paraffin-embedded human prostate cancer using Catalog

OPLAH antibody



Catalog Number: 113352

No:113352(OPLAH antibody) at dilution of 1:50 (under 40x lens)