

HIP1 antibody

Catalog Number: 111352

Product name

HIP1 antibody

WB: 1:500-1:5000

IHC: 1:20-1:200

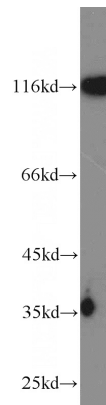
Specificity

Human; other species not tested.

Validations

Antibody description

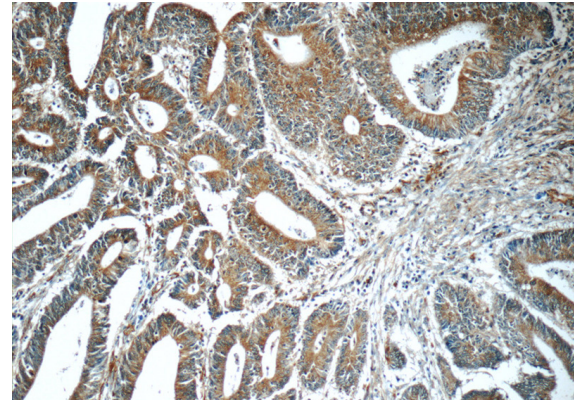
HIP1 Rabbit Polyclonal antibody. Positive IHC detected in human colon cancer tissue, human brain tissue, human prostate cancer tissue. Positive WB detected in DU 145 cells, A549 cells, HeLa cells, human brain tissue, PC-3 cells. Observed molecular weight by Western-blot: 116 kDa



Preparation

This antibody was obtained by immunization of HIP1 recombinant protein (Accession Number: NM_005338). Purification method: Antigen Affinity purified.

DU 145 cells were subjected to SDS PAGE followed by western blot with Catalog No:111352(HIP1 antibody) at dilution of 1:1000



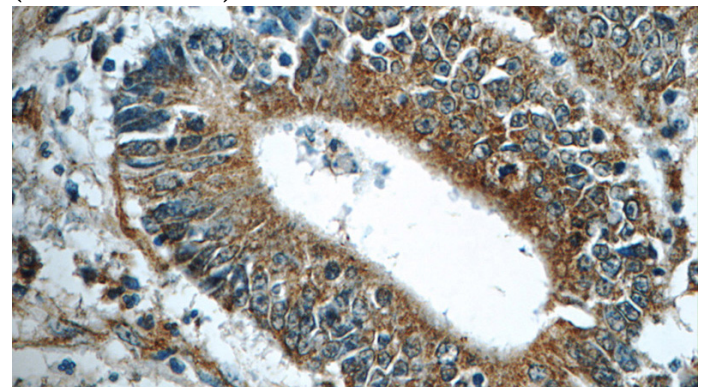
Formulation

PBS with 0.02% sodium azide and 50% glycerol pH 7.3.

Storage

Store at -20°C. DO NOT ALIQUOT

Immunohistochemistry of paraffin-embedded human colon cancer tissue slide using Catalog No:111352(HIP1 Antibody) at dilution of 1:50 (under 10x lens)



Clonality

Polyclonal

Ig Type

Rabbit IgG

Applications

ELISA, WB, IHC

Dilutions

Recommended Dilution:

Immunohistochemistry of paraffin-embedded

HIP1 antibody



Catalog Number: 111352

human colon cancer tissue slide using Catalog

No:111352(HIP1 Antibody) at dilution of 1:50
(under 40x lens)