

Human OBCAM/OPCML (His Tag) recombinant protein



Catalog Number: 500352

General Information

Gene Name Synonym

Opioid binding protein/cell adhesion molecule-like, isoform CRA_a; cDNA FLJ76211, highly similar to Homo sapiens opioid binding protein/cell adhesion molecule-like(OPCML)

Protein Construction

A DNA sequence encoding the human OPCML precursor (NP_002536.1) (Met 1-Asn 322) was expressed with a C-terminal polyhistidine tag.

Organism

Human

Expression Host

Human Cells

QC Testing

Purity

> 95 % as determined by SDS-PAGE

Endotoxin

< 1.0 EU per μg of the protein as determined by the LAL method

Stability

Samples are stable for up to twelve months from date of receipt at -70°C

Predicted N terminal

Gly 28

Molecular Mass

The mature recombinant human OPCML consists of 306 amino acids and has a calculated molecular mass of 34 kDa. As a result of glycosylation, rhOPCML migrates as an approximately 55-60 kDa protein in SDS-PAGE under reducing conditions.

Formulation

Lyophilized from sterile PBS, pH 7.4

1. 5 % trehalose and mannitol are added as protectants before lyophilization.

2. Please contact us for any concerns or special requirements.

Usage Guide

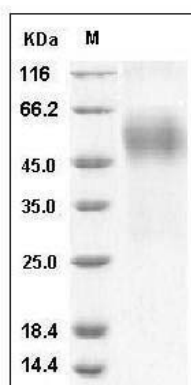
Storage

Store it under sterile conditions at -20°C to -80°C . It is recommended that the protein be aliquoted for optimal storage. Avoid repeated freeze-thaw cycles.

Reconstitution

Adding sterile water, prepare a stock solution of 0.25 mg/ml. Concentration is measured by UV-Vis.

SDS-PAGE



Human OBCAM / OPCML Protein (His Tag) SDS-PAGE