

# CXorf56 antibody

Catalog Number: 109652

## Product name

CXorf56 antibody

IP: 1:500-1:5000

IF: 1:20-1:200

## Specificity

Human, Mouse; other species not tested.

## Antibody description

CXorf56 Rabbit Polyclonal antibody. Positive WB detected in HeLa cells, HEK-293 cells, mouse kidney tissue. Positive IP detected in mouse kidney tissue. Positive IF detected in HeLa cells. Observed molecular weight by Western-blot: 26-30 kDa

## Preparation

This antibody was obtained by immunization of CXorf56 recombinant protein (Accession Number: BC023506). Purification method: Antigen Affinity purified.

## Formulation

PBS with 0.02% sodium azide and 50% glycerol pH 7.3.

## Storage

Store at -20°C. DO NOT ALIQUOT

## Clonality

Polyclonal

## Ig Type

Rabbit IgG

## Applications

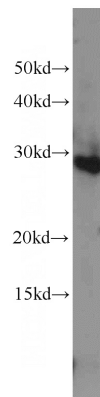
ELISA, WB, IF, IP

## Dilutions

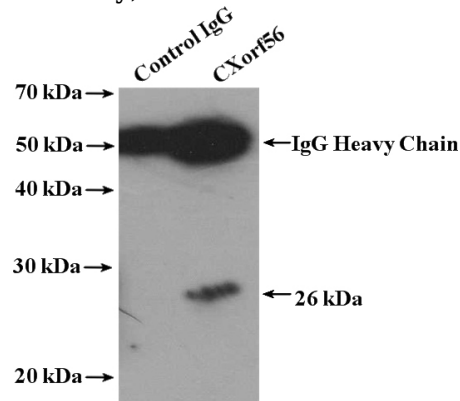
Recommended Dilution:

WB: 1:500-1:5000

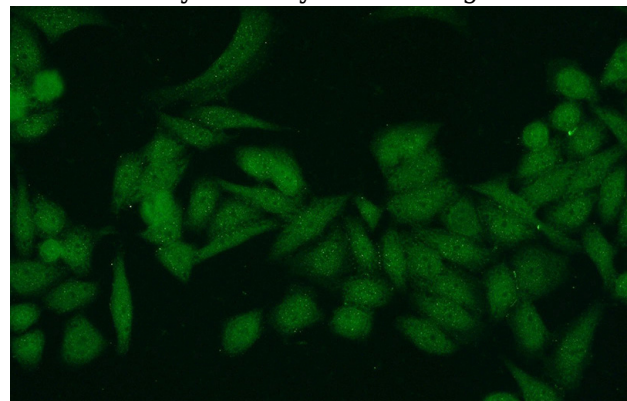
## Validations



HeLa cells were subjected to SDS PAGE followed by western blot with Catalog No:109652(CXorf56 antibody) at dilution of 1:1000



IP Result of anti-CXorf56 (IP:Catalog No:109652, 4ug; Detection:Catalog No:109652 1:1000) with mouse kidney tissue lysate 8000ug.



Immunofluorescent analysis of HeLa cells using Catalog No:109652(CXorf56 Antibody) at dilution

# CXorf56 antibody



Catalog Number: 109652

---

of 1:50 and Alexa Fluor 488-conjugated AffiniPure Goat Anti-Rabbit IgG(H+L)