

# MEMO1 antibody



Catalog Number: 112652

## Product name

MEMO1 antibody

IP: 1:200-1:2000

IF: 1:10-1:100

## Specificity

Human, Mouse, Rat; other species not tested.

## Antibody description

MEMO1 Rabbit Polyclonal antibody. Positive IF detected in BxPC-3 cells. Positive WB detected in BxPC-3 cells, COLO 320 cells, MCF7 cells, SH-SY5Y cells. Positive IP detected in MCF-7 cells. Observed molecular weight by Western-blot: 55 kDa

## Preparation

This antibody was obtained by immunization of MEMO1 recombinant protein (Accession Number: NM\_001301833). Purification method: Antigen affinity purified.

## Formulation

PBS with 0.02% sodium azide and 50% glycerol pH 7.3.

## Storage

Store at -20°C. DO NOT ALIQUOT

## Clonality

Polyclonal

## Ig Type

Rabbit IgG

## Applications

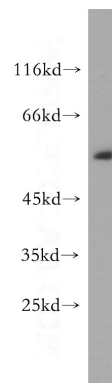
ELISA, WB, IP, IF

## Dilutions

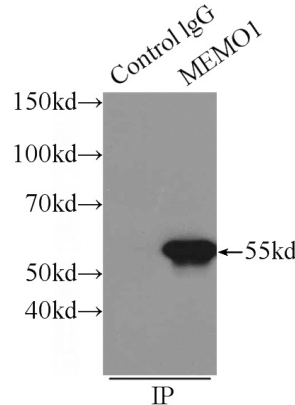
Recommended Dilution:

WB: 1:500-1:5000

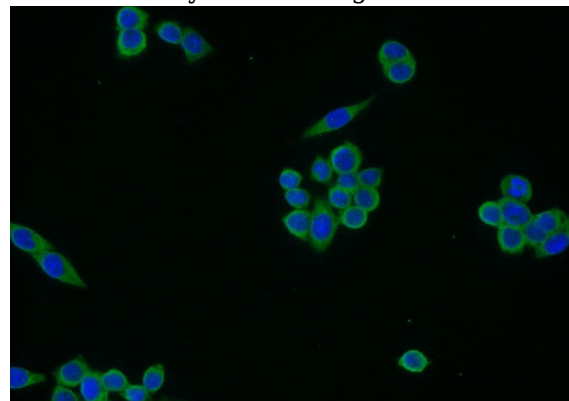
## Validations



BxPC-3 cells were subjected to SDS PAGE followed by western blot with Catalog No:112652(MEMO1 antibody) at dilution of 1:300



IP Result of anti-MEMO1 (IP:Catalog No:112652, 3ug; Detection:Catalog No:112652 1:500) with MCF-7 cells lysate 1000ug.



Immunofluorescent analysis of BxPC-3 cells using Catalog No:112652(MEMO1 Antibody) at dilution

# MEMO1 antibody



Catalog Number: 112652

---

of 1:25 and Alexa Fluor 488-conjugated AffiniPure Goat Anti-Rabbit IgG(H+L)