

# GUF1 antibody



Catalog Number: 111252

## Product name

GUF1 antibody

## Specificity

Human, Mouse; other species not tested.

## Antibody description

GUF1 Rabbit Polyclonal antibody. Positive IP detected in HeLa cells. Positive WB detected in HeLa cells, HepG2 cells, mouse brain tissue, mouse liver tissue, mouse pancreas tissue. Positive IF detected in HepG2 cells. Positive IHC detected in human oesophagus tissue, human kidney tissue, human lung cancer tissue, human testis tissue. Observed molecular weight by Western-blot: 70 kDa

## Preparation

This antibody was obtained by immunization of GUF1 recombinant protein (Accession Number: NM\_021927). Purification method: Antigen affinity purified.

## Formulation

PBS with 0.02% sodium azide and 50% glycerol pH 7.3.

## Storage

Store at -20°C. DO NOT ALIQUOT

## Clonality

Polyclonal

## Ig Type

Rabbit IgG

## Applications

ELISA, WB, IF, IHC, IP

## Dilutions

Recommended Dilution:

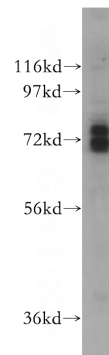
WB: 1:500-1:5000

IP: 1:200-1:2000

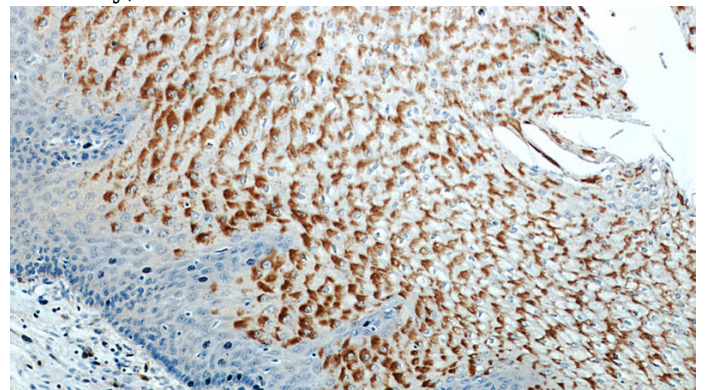
IHC: 1:20-1:200

IF: 1:10-1:100

## Validations



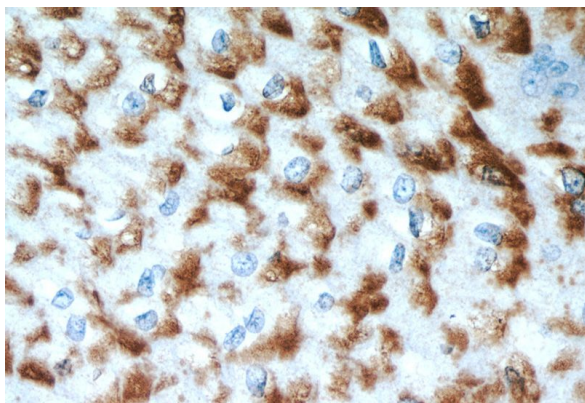
HeLa cells were subjected to SDS PAGE followed by western blot with Catalog No:111252(GUF1 antibody) at dilution of 1:500



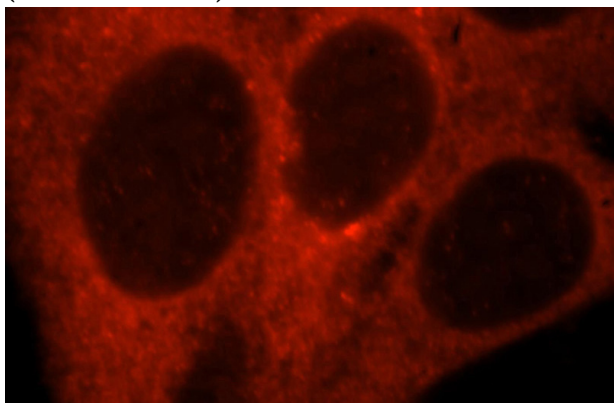
Immunohistochemical of paraffin-embedded human oesophagus using Catalog No:111252(GUF1 antibody) at dilution of 1:50 (under 10x lens)

# GUF1 antibody

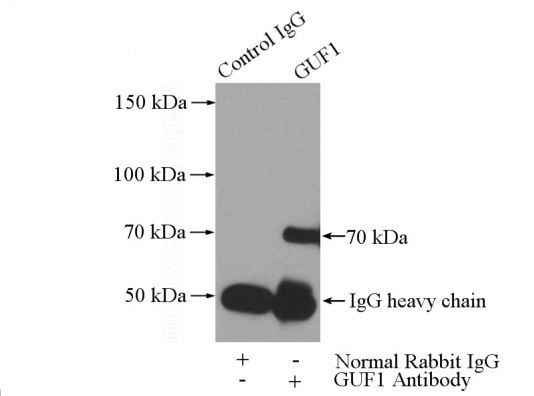
Catalog Number: 111252



Immunohistochemical of paraffin-embedded human oesophagus using Catalog No:111252(GUF1 antibody) at dilution of 1:50 (under 40x lens)



Immunofluorescent analysis of HepG2 cells, using GUF1 antibody Catalog No:111252 at 1:25 dilution and Rhodamine-labeled goat anti-rabbit



IgG (red).

IP Result of anti-GUF1 (IP:Catalog No:111252, 3ug; Detection:Catalog No:111252 1:500) with HeLa cells lysate 3200ug.