

# CC2D1B antibody

Catalog Number: 108952

## Product name

CC2D1B antibody

## Specificity

Human, Mouse, Rat; other species not tested.

## Antibody description

CC2D1B Rabbit Polyclonal antibody. Positive IP detected in mouse brain tissue. Positive WB detected in mouse brain tissue, human placenta tissue, mouse kidney tissue, SH-SY5Y cells. Observed molecular weight by Western-blot: 120 kDa

## Preparation

This antibody was obtained by immunization of CC2D1B recombinant protein (Accession Number: BC007912). Purification method: Antigen affinity purified.

## Formulation

PBS with 0.02% sodium azide and 50% glycerol pH 7.3.

## Storage

Store at -20°C. DO NOT ALIQUOT

## Clonality

Polyclonal

## Ig Type

Rabbit IgG

## Applications

ELISA, WB, IP

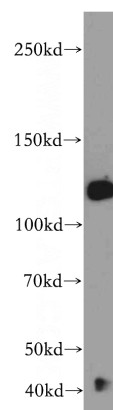
## Dilutions

Recommended Dilution:

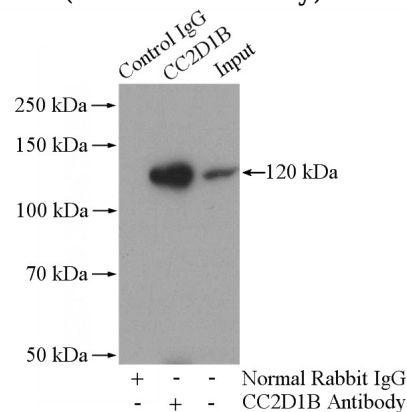
WB: 1:1000-1:10000

IP: 1:200-1:2000

## Validations



mouse brain tissue were subjected to SDS PAGE followed by western blot with Catalog No:108952(CC2D1B antibody) at dilution of 1:500



IP Result of anti-CC2D1B (IP:Catalog No:108952, 4ug; Detection:Catalog No:108952 1:500) with mouse brain tissue lysate 2560ug.