

ALADIN antibody



Catalog Number: 107952

Product name

ALADIN antibody

IHC: 1:20-1:200

IF: 1:20-1:200

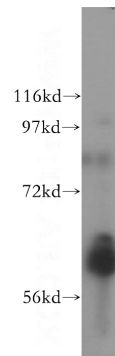
Specificity

Human; other species not tested.

Antibody description

ALADIN Rabbit Polyclonal antibody. Positive IHC detected in human stomach cancer tissue. Positive IF detected in COS-7 cells, HeLa cells. Positive WB detected in SH-SY5Y cells, HeLa cells. Observed molecular weight by Western-blot: 60 kDa

Validations



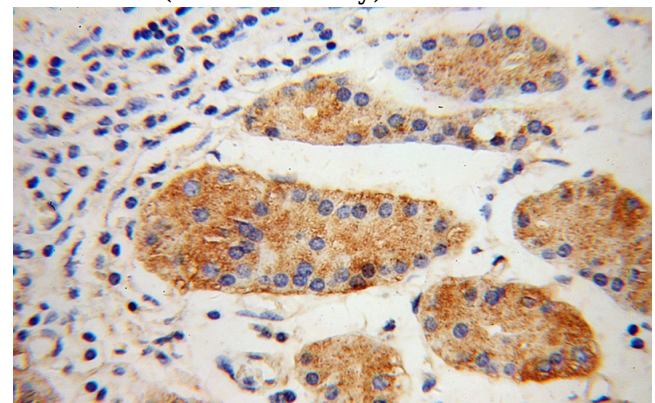
Preparation

This antibody was obtained by immunization of ALADIN recombinant protein (Accession Number: NM_015665). Purification method: Antigen affinity purified.

SH-SY5Y cells were subjected to SDS PAGE followed by western blot with Catalog No:107952(AAAS antibody) at dilution of 1:600

Formulation

PBS with 0.02% sodium azide and 50% glycerol pH 7.3.



Storage

Store at -20°C. DO NOT ALIQUOT

Clonality

Polyclonal

Immunohistochemical of paraffin-embedded human stomach cancer using Catalog No:107952(AAAS antibody) at dilution of 1:100 (under 40x lens)

Ig Type

Rabbit IgG

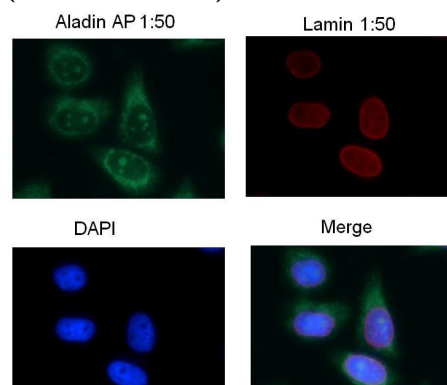
Applications

ELISA, WB, IHC, IF

Dilutions

Recommended Dilution:

WB: 1:500-1:5000



Immunofluorescent analysis of COS-7 cells using

ALADIN antibody



Catalog Number: 107952

Catalog No:107952(AAAS Antibody) at dilution of 1:50 and Rhodamine-Goat anti-Rabbit IgG