

# Human EF1B / EEF1B2 (His Tag) recombinant protein



Catalog Number: 501952

## General Information

### Protein Construction

A DNA sequence encoding the human EEF1B2 (P24534)(Met1-Ile225) was expressed with a polyhistidine tag at the N-terminus.

### Organism

Human

### Expression Host

E. coli

## QC Testing

### Purity

> 90 % as determined by SDS-PAGE

### Endotoxin

Please contact us for more information.

### Stability

Samples are stable for up to twelve months from date of receipt at -70°C

### Predicted N terminal

His

### Molecular Mass

The recombinant human EEF1B2 consists of 240 amino acids and predicts a molecular mass of 26.6 KDa. It migrates as an approximately 30 KDa band in SDS-PAGE under reducing conditions.

## Formulation

Lyophilized from sterile 50mM Tris, 100mM NaCl, 10% Glycerol, 1mM DTT, pH 8.0.

1. 5 % trehalose and mannitol are added as protectants before lyophilization.
2. Please contact us for any concerns or special requirements.

## Usage Guide

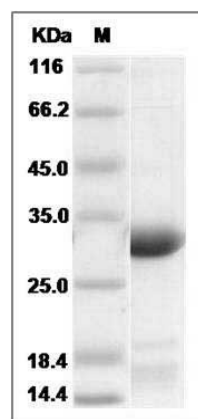
### Storage

Store it under sterile conditions at -20°C to -80°C. It is recommended that the protein be aliquoted for optimal storage. Avoid repeated freeze-thaw cycles.

### Reconstitution

Adding sterile water, prepare a stock solution of 0.25 mg/ml. Concentration is measured by UV-Vis.

## SDS-PAGE



Human EF1B / EEF1B2 Protein (His Tag) SDS-PAGE