

Anti-FGFR2 antibody



Catalog Number: 176552

Product name

Anti-FGFR2 antibody

Specificity

Human, Mouse, Rat

Antibody description

Rabbit monoclonal antibody to FGFR2

Preparation

This antigen of this antibody was synthetic peptide within human fgfr2 aa 1-50.

Formulation

Liquid, 1*TBS (pH7.4), 0.05% BSA, 40% Glycerol.
Preservative: 0.05% Sodium Azide.

Storage

Store at +4°C after thawing. Aliquot store at -20°C or -80°C. Avoid repeated freeze / thaw cycles.

Clonality

Monoclonal

Ig Type

Rabbit IgG

Applications

WB, IP

Dilutions

WB: 1:1,000-1:2,000

IP: 1:10-1:50

Validations

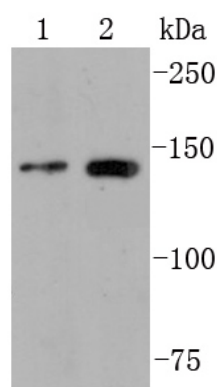


Fig1.; Western blot analysis of FGFR2 on different lysates. Proteins were transferred to a PVDF membrane and blocked with 5% BSA in PBS for 1 hour at room temperature. The primary antibody (1/500) was used in 5% BSA at room temperature for 2 hours. Goat Anti-Rabbit IgG - HRP Secondary Antibody (HA1001) at 1:200,000 dilution was used for 1 hour at room temperature.; Positive control;; Lane 1: MCF-7 cell lysate; Lane 2: Jurkat cell lysate