

General Information

Gene Name Synonym

Anterior pituitary glycoprotein hormones common subunit alpha; Choriogonadotropin alpha chain; Chorionic gonadotropin subunit alpha; Follicle-stimulating hormone alpha chain; Follitropin alpha chain; Luteinizing hormone alpha chain; Lutropin alpha chain; Thyroid-stimulating hormone alpha chain; Thyrotropin alpha chain

Protein Construction

A DNA sequence encoding the human CGA (NP_000726.1) (Met1-Ser116) was expressed with a C-terminal polyhistidine tag.

Organism

Human

Expression Host

Human Cells

QC Testing

Purity

> 90 % as determined by SDS-PAGE

Endotoxin

< 1.0 EU per μg of the protein as determined by the LAL method

Stability

Samples are stable for up to twelve months from date of receipt at -70°C

Predicted N terminal

Ala 25

Molecular Mass

The recombinant human CGA comprises 103 amino acids and has a predicted molecular mass of 11.6 kDa. The apparent molecular mass of the protein is approximately 25.9 kDa in SDS-PAGE under reducing conditions.

Formulation

Lyophilized from sterile PBS, pH 7.4.

1. 5 % trehalose and mannitol are added as protectants before lyophilization.

2. Please contact us for any concerns or special requirements.

Usage Guide

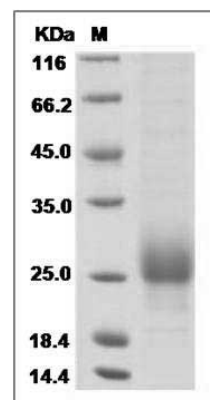
Storage

Store it under sterile conditions at -20°C to -80°C . It is recommended that the protein be aliquoted for optimal storage. Avoid repeated freeze-thaw cycles.

Reconstitution

Adding sterile water, prepare a stock solution of 0.25 mg/ml. Concentration is measured by UV-Vis.

SDS-PAGE



Human FSH alpha / TSH alpha / CGA Protein (His Tag) SDS-PAGE