

Anti-Carcino Embryonic Antigen CEA (2A8) Mouse antibody



Catalog Number: 168152

Product name

Anti-Carcino Embryonic Antigen CEA (2A8) Mouse antibody

Specificity

Human

Antibody description

Carcino Embryonic Antigen CEA (2A8) Mouse monoclonal antibody

Preparation

Antigen: Synthetic Peptide of Carcinoembryonic Antigen

Formulation

PBS, pH 7.4, containing 0.02% sodium azide as Preservative and 50% Glycerol.

Storage

Store at 4°C short term. Store at -20°C long term. Avoid freeze / thaw cycle.

Clonality

Monoclonal

Ig Type

Mouse IgG1

Applications

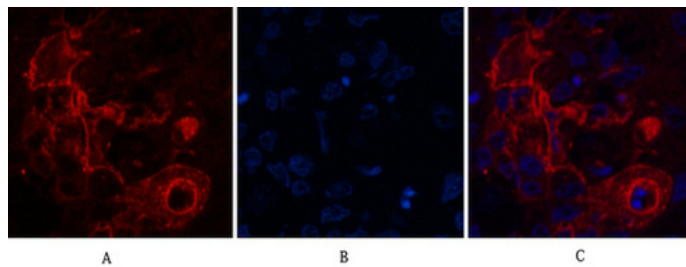
IHC-P, ICC/IF

Dilutions

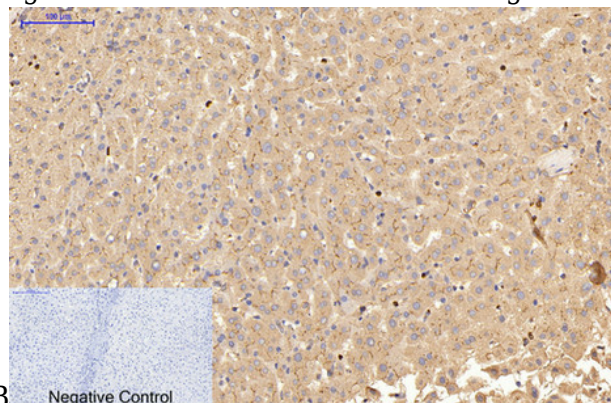
IHC: 1/200

IF: 1/50-200

Validations

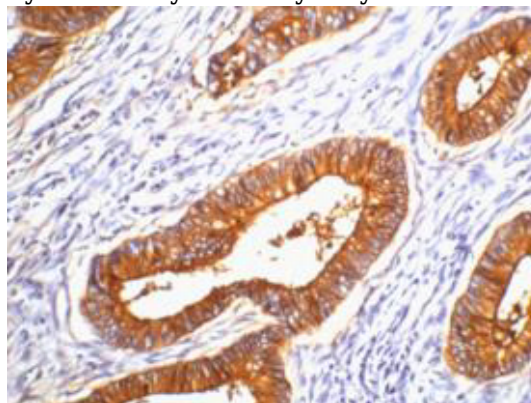


Immunofluorescence analysis of Human-lung-cancer tissue. 1, Carcinoembryonic Antigen Monoclonal Antibody(10E1)(red) was diluted at 1:200(4°C, overnight). 2, Cy3 labeled Secondary antibody was diluted at 1:300(room temperature, 50min). 3, Picture B: DAPI(blue) 10min. Picture A: Target. Picture B: DAPI. Picture C: merge of



Immunohistochemical analysis of paraffin-embedded Human-liver tissue.

1, Carcinoembryonic Antigen Monoclonal Antibody(10E1) was diluted at 1:200(4°C, overnight). 2, Sodium citrate pH 6.0 was used for antibody retrieval(>98°C, 20min). 3, Secondary antibody was diluted at 1:200(room temperature, 30min). Negative control was used by secondary antibody only.



Anti-Carcino Embryonic Antigen CEA (2A8) Mouse antibody



Catalog Number: 168152

IHC staining of human colon cancer tissue, diluted at 1:200.