

# CHCHD2 antibody



Catalog Number: 107152

## Product name

CHCHD2 antibody

## Specificity

Human; other species not tested.

## Antibody description

CHCHD2 Mouse Monoclonal antibody. Positive WB detected in HepG2 cells. Positive IF detected in HepG2 cells. Observed molecular weight by Western-blot: 17 kDa

## Preparation

This antibody was obtained by immunization of CHCHD2 recombinant protein (Accession Number: NM\_016139). Purification method: Protein G purified.

## Formulation

PBS with 0.02% sodium azide and 50% glycerol pH 7.3.

## Storage

Store at -20°C. DO NOT ALIQUOT

## Clonality

Monoclonal

## Ig Type

Mouse IgG1

## Applications

ELISA, WB, IF

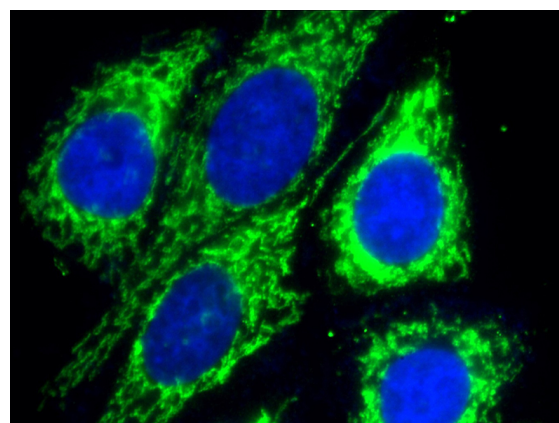
## Dilutions

Recommended Dilution:

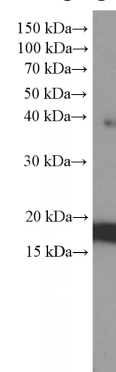
WB: 1:1000-1:10000

IF: 1:50-1:500

## Validations



Immunofluorescent analysis of (-20oc Ethanol) fixed HepG2 cells using Catalog No:107152(CHCHD2 Antibody) at dilution of 1:100 and Alexa Fluor 488-conjugated AffiniPure



Goat Anti-Mouse IgG(H+L)

HepG2 cells were subjected to SDS PAGE followed by western blot with Catalog No:107152(CHCHD2 Antibody) at dilution of 1:2000