

Anti-Histone H4 Rabbit antibody



Catalog Number: 167152

Product name

Anti-Histone H4 Rabbit antibody

WB: 1/500 - 1/2000

IHC: 1/100 - 1/300

Specificity

Human, Mouse, Rat, Monkey

IF: 1/200 - 1/1000

ELISA: 1/5000

Antibody description

Histone H4 Rabbit polyclonal antibody

Validations

Preparation

Antigen: The antiserum was produced against synthesized peptide derived from human Histone H4. AA range:6-55

Formulation

Liquid in PBS containing 50% glycerol, 0.5% BSA and 0.02% sodium azide.

Storage

Store at 4°C short term. Store at -20°C long term. Avoid freeze / thaw cycle.

Clonality

Polyclonal

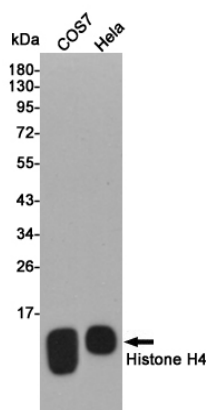
Ig Type

Rabbit IgG

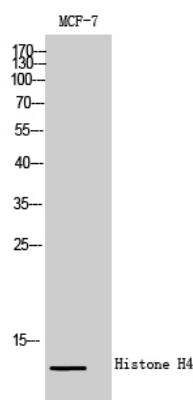
Applications

WB, IHC-P, ICC/IF, ELISA

Dilutions



Western blot detection of Histone H4 in COS7 and HeLa cell lysates using Histone H4 rabbit pAb (1:2000 diluted). Predicted band size: 11 kDa. Observed band size: 11 kDa.



Western Blot analysis of MCF-7 cells using Histone H4 Polyclonal Antibody