

Human CD32a / Fc gamma RIIA / FCGR2A (167 Arg, His & AVI Tag) recombinant protein



Catalog Number: 504152

General Information

Gene Name Synonym

CDw32; Fc-gamma RII-a

Protein Construction

A DNA sequence encoding the extracellular domain (Met 1-Met 210) of human CD32a (AAA35827.1) was fused with a c-terminal polyhistidine tagged AVI tag at the C-terminus. The expressed protein was biotinylated in vivo by the Biotin-Protein ligase (BirA enzyme) which is co-expressed. It is identical to FCGR2A131H/R in the reference.

Organism

Human

Expression Host

Human Cells

QC Testing

Activity

1. Measured by its binding ability in a functional ELISA. Immobilized Human IgG1 at 10 µg/ml (100 µl/well) can bind Human CD32a(Cat:503967-B). The EC₅₀ of Human CD32a(Cat:503967-B) is 1.6 - 3.8 µg/ml.
2. Labeling ratio of biotin to protein: 0.3

Purity

> 97 % as determined by SDS-PAGE

Endotoxin

< 1.0 EU per µg of the protein as determined by the LAL method

Stability

Samples are stable for up to twelve months from date of receipt at -70°C

Predicted N terminal

Gln 34

Molecular Mass

The recombinant human CD32a consists of 213 amino acids after removal of the signal peptide and predicts a molecular mass of 23.6 kDa. It migrates as an approximately 32 kDa protein due to glycosylation by SDS-PAGE under reducing conditions.

Formulation

- Lyophilized from sterile PBS, pH 7.4
1. 5 % trehalose and mannitol are added as protectants before lyophilization.
 2. Please contact us for any concerns or special requirements.

Usage Guide

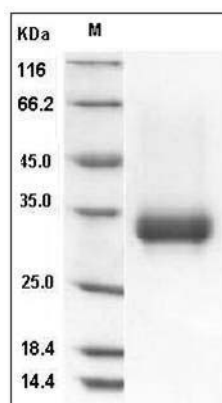
Storage

Store it under sterile conditions at -20°C to -80°C. It is recommended that the protein be aliquoted for optimal storage. Avoid repeated freeze-thaw cycles.

Reconstitution

Adding sterile water, prepare a stock solution of 0.25 mg/ml. Concentration is measured by UV-Vis.

SDS-PAGE



Human CD32a / Fc gamma RIIA / FCGR2A (167 Arg, His & AVI Tag) recombinant protein



Catalog Number: 504152

Human CD32a / FCGR2A Protein (167 Arg, His & AVI Tag), Biotinylated SDS-PAGE