

LASP1 antibody



Catalog Number: 112152

Product name

LASP1 antibody

Recommended Dilution:

WB: 1:1000-1:10000

Specificity

Human, Mouse, Rat; other species not tested.

IP: 1:500-1:5000

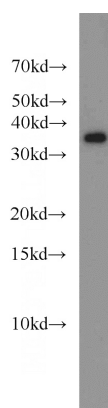
IHC: 1:20-1:200

Antibody description

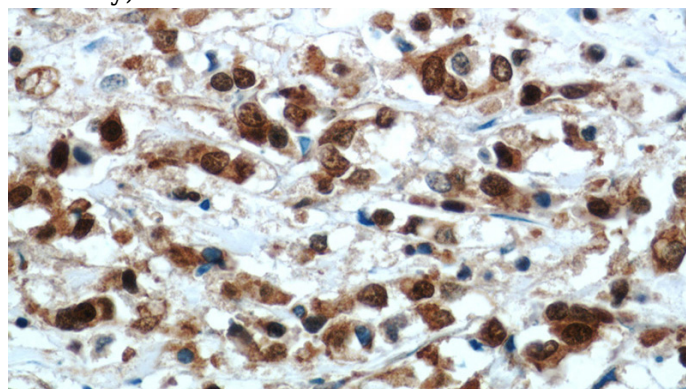
LASP1 Rabbit Polyclonal antibody. Positive WB detected in MCF7 cells, MDA-MB-453s cells, mouse brain tissue, PC-3 cells, SGC-7901 cells. Positive IP detected in rat brain tissue. Positive IF detected in Hela cells. Positive IHC detected in human breast cancer tissue, human colon cancer tissue. Observed molecular weight by Western-blot: 38-40 kDa

IF: 1:10-1:100

Validations



MCF7 cells were subjected to SDS PAGE followed by western blot with Catalog No:112152(LASP1 antibody) at dilution of 1:2000



Immunohistochemical of paraffin-embedded human breast cancer using Catalog No:112152(LASP1 antibody) at dilution of 1:100 (under 40x lens)

Preparation

This antibody was obtained by immunization of LASP1 recombinant protein (Accession Number: NM_006148). Purification method: Antigen affinity purified.

Formulation

PBS with 0.1% sodium azide and 50% glycerol pH 7.3.

Storage

Store at -20°C. DO NOT ALIQUOT

Clonality

Polyclonal

Ig Type

Rabbit IgG

Applications

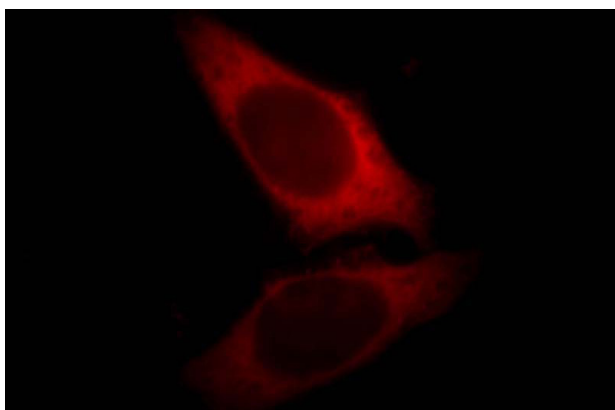
ELISA, WB, IF, IHC, IP

Dilutions

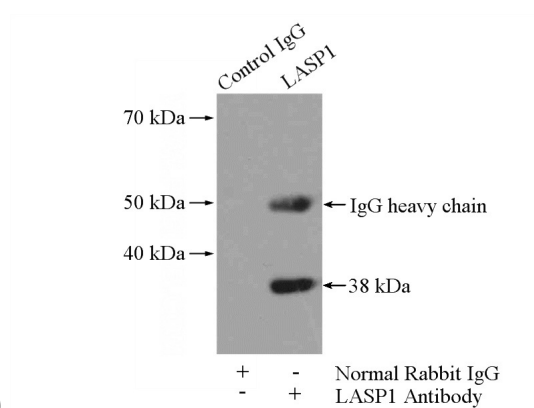
LASP1 antibody



Catalog Number: 112152



Immunofluorescent analysis of HeLa cells, using LASP1 antibody Catalog No:112152 at 1:25 dilution and Rhodamine-labeled goat anti-rabbit



IgG (red).

IP Result of anti-LASP1 (IP:Catalog No:112152, 4ug; Detection:Catalog No:112152 1:1500) with rat brain tissue lysate 4000ug.