

# GPX8 antibody

Catalog Number: 111152

## Product name

GPX8 antibody

## Immunogen

[Human GPX8 Recombinant protein \(His tag\)](#)

## Specificity

Human, Mouse, Rat; other species not tested.

## Antibody description

GPX8 Rabbit Polyclonal antibody. Positive WB detected in transfected cells. Positive IP detected in HEK-293 cells. Observed molecular weight by Western-blot: 24 kDa

## Preparation

This antibody was obtained by immunization of GPX8 recombinant protein (Accession Number: NM\_001008397). Purification method: Antigen affinity purified.

## Formulation

PBS with 0.1% sodium azide and 50% glycerol pH 7.3.

## Storage

Store at -20°C. DO NOT ALIQUOT

## Clonality

Polyclonal

## Ig Type

Rabbit IgG

## Applications

ELISA, WB, IP

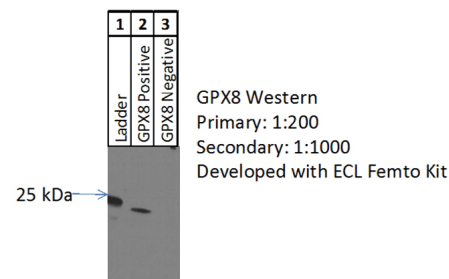
## Dilutions

Recommended Dilution:

WB: 1:100-1:400

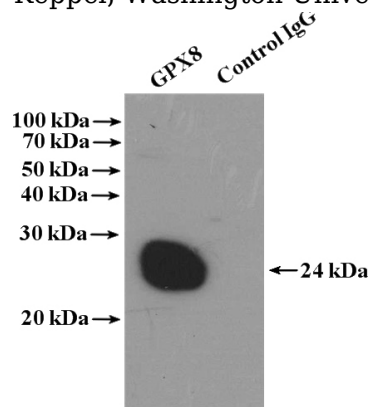
IP: 1:200-1:1000

## Validations



GPX8+: HEK cells transfected with murine GPX8  
GPX8-: untransfected HEK cells

WB result of GPX8 antibody (Catalog No:111152, 1:200) with transfected HEK293 cells by Dr. Molly Keppel, Washington University.



IP Result of anti-GPX8 (IP:Catalog No:111152, 4ug; Detection:Catalog No:111152 1:300) with HEK-293 cells lysate 3000ug.