

# RSPO3 antibody

Catalog Number: 114852

## Product name

RSPO3 antibody

WB: 1:200-1:1000

IP: 1:200-1:1000

## Specificity

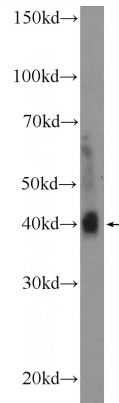
Human, Mouse, Rat; other species not tested.

IHC: 1:20-1:200

## Antibody description

RSPO3 Rabbit Polyclonal antibody. Positive IHC detected in human lung cancer tissue, human placenta tissue. Positive IP detected in human placenta tissue. Positive WB detected in mouse brain tissue, A549 cells, human placenta tissue, Transfected HEK-293 cells. Observed molecular weight by Western-blot: 40 kDa

## Validations



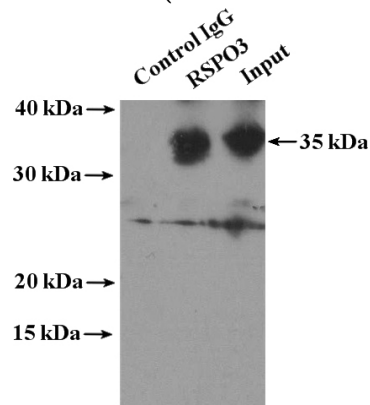
## Preparation

This antibody was obtained by immunization of RSPO3 recombinant protein (Accession Number: NM\_032784). Purification method: Antigen affinity purified.

mouse brain tissue were subjected to SDS PAGE followed by western blot with Catalog No:114852(RSPO3 Antibody) at dilution of 1:300

## Formulation

PBS with 0.1% sodium azide and 50% glycerol pH 7.3.



## Storage

Store at -20°C. DO NOT ALIQUOT

## Clonality

Polyclonal

IP Result of anti-RSPO3 (IP:Catalog No:114852, 4ug; Detection:Catalog No:114852 1:300) with human placenta tissue lysate 2800ug.

## Ig Type

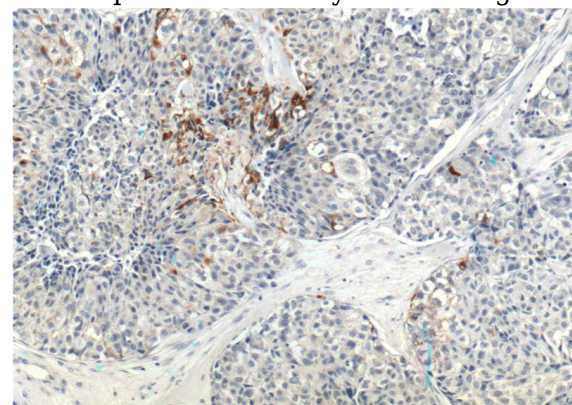
Rabbit IgG

## Applications

ELISA, WB, IP, IHC

## Dilutions

Recommended Dilution:

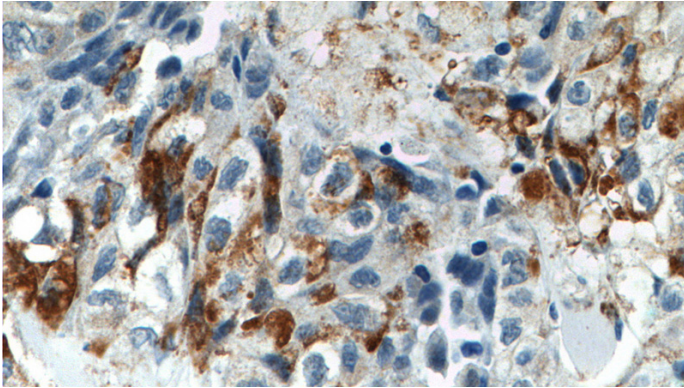


# RSPO3 antibody

Catalog Number: 114852

---

Immunohistochemistry of paraffin-embedded human lung cancer tissue slide using Catalog No:114852(RSPO3 Antibody) at dilution of 1:200 (under 10x lens).



Immunohistochemistry of paraffin-embedded human lung cancer tissue slide using Catalog No:114852(RSPO3 Antibody) at dilution of 1:200 (under 40x lens).