

# PKC iota antibody

Catalog Number: 113852

## Product name

PKC iota antibody

IP: 1:200-1:2000

IHC: 1:20-1:200

## Specificity

Human, Mouse, Rat; other species not tested.

## Antibody description

PKC iota Rabbit Polyclonal antibody. Positive WB detected in HeLa cells, MCF7 cells, MCF-7 cells. Positive IP detected in HeLa cells. Positive IHC detected in human breast cancer tissue. Observed molecular weight by Western-blot: 67 kDa

## Preparation

This antibody was obtained by immunization of PKC iota recombinant protein (Accession Number: BC022016). Purification method: Antigen affinity purified.

## Formulation

PBS with 0.02% sodium azide and 50% glycerol pH 7.3.

## Storage

Store at -20°C. DO NOT ALIQUOT

## Clonality

Polyclonal

## Ig Type

Rabbit IgG

## Applications

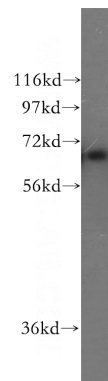
ELISA, IHC, WB, IP

## Dilutions

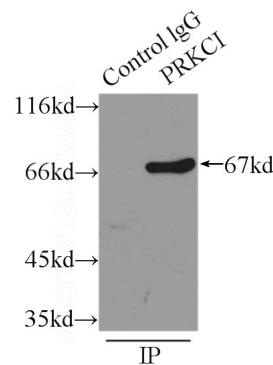
Recommended Dilution:

WB: 1:200-1:2000

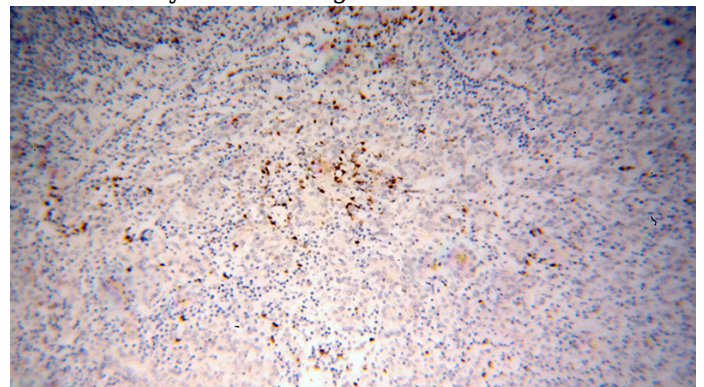
## Validations



HeLa cells were subjected to SDS PAGE followed by western blot with Catalog No:113852 (PRKCI antibody) at dilution of 1:500



IP Result of anti-PRKCI (IP: Catalog No:113852, 3ug; Detection: Catalog No:113852 1:500) with HeLa cells lysate 2500ug.



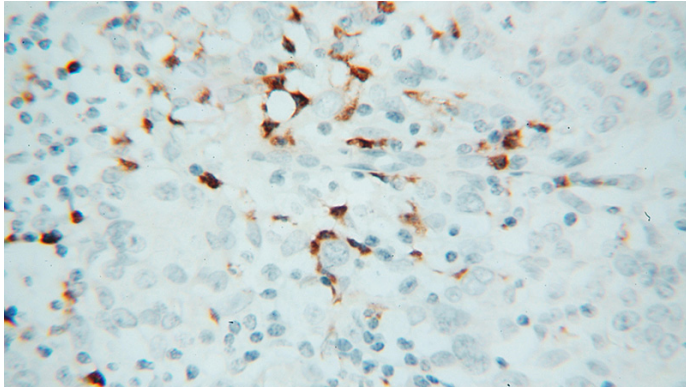
Immunohistochemical of paraffin-embedded human breast cancer using Catalog

# PKC iota antibody

Catalog Number: 113852

---

No:113852(PRKCI antibody) at dilution of 1:100  
(under 10x lens)



Immunohistochemical of paraffin-embedded  
human breast cancer using Catalog  
No:113852(PRKCI antibody) at dilution of 1:100  
(under 40x lens)