

MRPS25 antibody



Catalog Number: 112852

Product name

MRPS25 antibody

IP: 1:200-1:2000

IF: 1:10-1:100

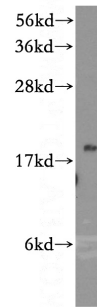
Specificity

Human, Mouse, Rat; other species not tested.

Validations

Antibody description

MRPS25 Rabbit Polyclonal antibody. Positive WB detected in HepG2 cells, HEK-293 cells, MCF7 cells. Positive IP detected in HEK-293 cells. Positive IF detected in Hela cells. Observed molecular weight by Western-blot: 18 kDa



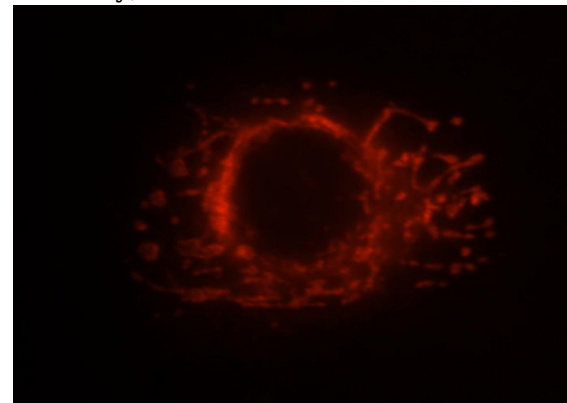
Preparation

This antibody was obtained by immunization of MRPS25 recombinant protein (Accession Number: NM_022497). Purification method: Antigen affinity purified.

HepG2 cells were subjected to SDS PAGE followed by western blot with Catalog No:112852(MRPS25 antibody) at dilution of 1:500

Formulation

PBS with 0.02% sodium azide and 50% glycerol pH 7.3.



Storage

Store at -20°C. DO NOT ALIQUOT

Clonality

Polyclonal

Immunofluorescent analysis of Hela cells, using MRPS25 antibody Catalog No:112852 at 1:25 dilution and Rhodamine-labeled goat anti-rabbit

Ig Type

Rabbit IgG

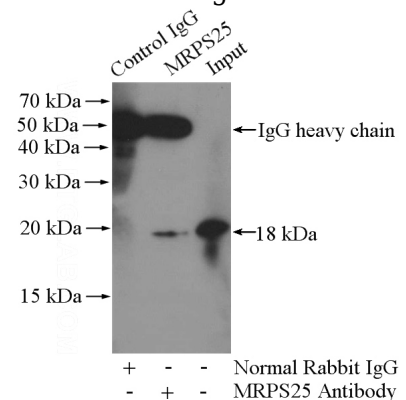
Applications

ELISA, WB, IF, IP

Dilutions

Recommended Dilution:

WB: 1:500-1:5000



IgG (red).

IP Result of anti-MRPS25 (IP:Catalog No:112852,

MRPS25 antibody



Catalog Number: 112852

4ug; Detection:Catalog No:112852 1:500) with HEK-293 cells lysate 1600ug.