

Anti-Sox2 antibody



Catalog Number: 100852

Product name

Anti-Sox2 antibody

Specificity

Human Sox2

Antibody description

Rabbit polyclonal to Sox2

Preparation

Produced in rabbits immunized with a synthetic peptide corresponding to the N-terminus of the Human Sox2, and purified by antigen affinity chromatography.

Formulation

0.2 µm filtered solution in PBS with 5% trehalose

Storage

This antibody can be stored at 2°C-8°C for one month without detectable loss of activity. Antibody products are stable for twelve months from date of receipt when stored at -20°C to -80°C.

Preservative-Free.

Sodium azide is recommended to avoid contamination (final concentration 0.05%-0.1%). It is toxic to cells and should be disposed of properly. Avoid repeated freeze-thaw cycles.

Clonality

Polyclonal

Ig Type

Rabbit IgG

Applications

WB, IHC-P, IP

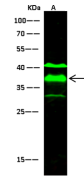
Dilutions

WB: 1-10 µg/mL

IHC-P: 0.1-2 µg/mL

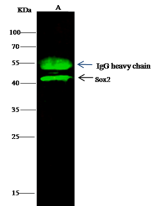
IP: 0.5-2 µg/mg of lysate

Validations



Lanes	A
Items	
Sample (whole cell lysate)	HES59
Sample Volume (µg/lane)	30
Gel	13% SDS-PAGE reducing gel
Recommended Concentration	1-10 µg/ml
Secondary Antibody	Dylight 800-labeled Antibody To Rabbit IgG (H+L), at 1:5000 dilution.
Explanation	Developed using Odyssey imaging system. Predicted band size : 34 kDa Observed band size : 37 kDa Additional bands at : 41 kDa and 30 kDa (We are unsure as to the identity of these extra bands. They are possible non-specific bindings).

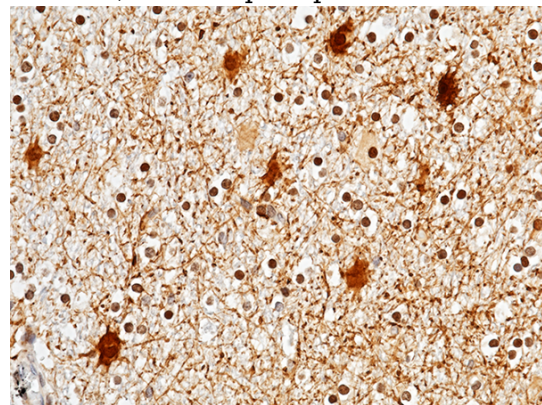
Sox2 Antibody, Rabbit PAb, Antigen Affinity



Lanes	A
Items	
Sample (whole cell lysate)	Hsp412
Sample quantity	0.5 mg
IP antibody quantity	2 µg
Protein G agarose	15 µl of 50% Protein G Agarose
Gel	13% SDS-PAGE reducing gel
Primary antibody	KLIF-6105A106 antibody at 5 µg/ml
Secondary antibody	Dylight 800-labeled antibody to rabbit IgG (H+L), at 1:5000 dilution.

Purified, Western blot

Sox2 Antibody, Rabbit PAb, Antigen Affinity Purified, Immunoprecipitation

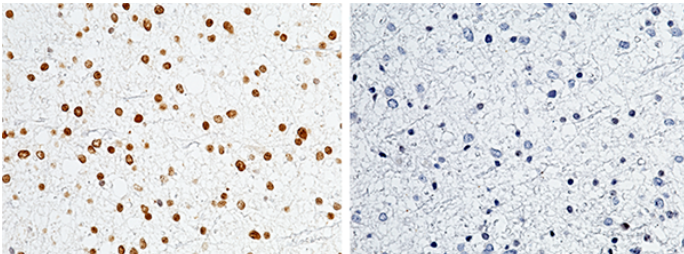


Sox2 Antibody, Rabbit PAb, Antigen Affinity Purified, Immunohistochemistry

Anti-Sox2 antibody

Catalog Number: 100852

Immunochemical staining of human Sox2 in human brain with rabbit polyclonal antibody (1 $\mu\text{g}/\text{mL}$, formalin-fixed paraffin embedded sections).



Sox2 Antibody	+	+
Sox2 Antigen	-	+

Sox2 Antibody, Rabbit PAb, Antigen Affinity Purified, Immunohistochemistry

Immunochemical staining of human Sox2 in human glioma with rabbit polyclonal antibody (1 $\mu\text{g}/\text{mL}$, formalin-fixed paraffin embedded sections). The left panel: tissue incubated with primary antibody; The right panel: tissue incubated with the mixture of primary antibody and antigen (polypeptide).