

SND1 antibody

Catalog Number: 115452

Product name

SND1 antibody

IHC: 1:20-1:200

IF: 1:50-1:500

Specificity

Human, Mouse, Rat; other species not tested.

Antibody description

SND1 Rabbit Polyclonal antibody. Positive WB detected in HeLa cells, COLO 320 cells, Jurkat cells. Positive IF detected in HeLa cells. Positive IHC detected in human liver tissue. Observed molecular weight by Western-blot: 101 kDa

Preparation

This antibody was obtained by immunization of SND1 recombinant protein (Accession Number: NM_014390). Purification method: Antigen affinity purified.

Formulation

PBS with 0.1% sodium azide and 50% glycerol pH 7.3.

Storage

Store at -20°C. DO NOT ALIQUOT

Clonality

Polyclonal

Ig Type

Rabbit IgG

Applications

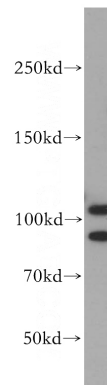
ELISA, WB, IHC, IF

Dilutions

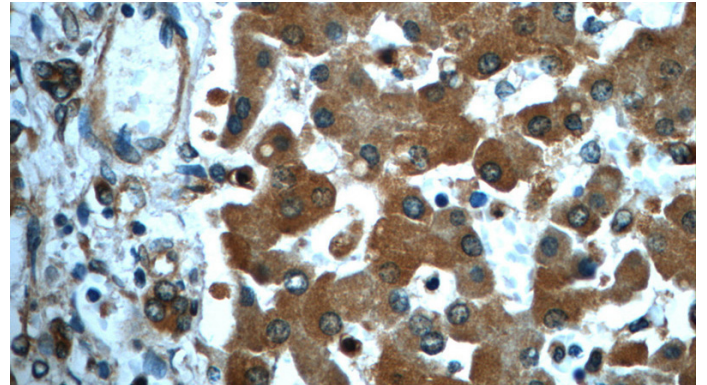
Recommended Dilution:

WB: 1:200-1:1000

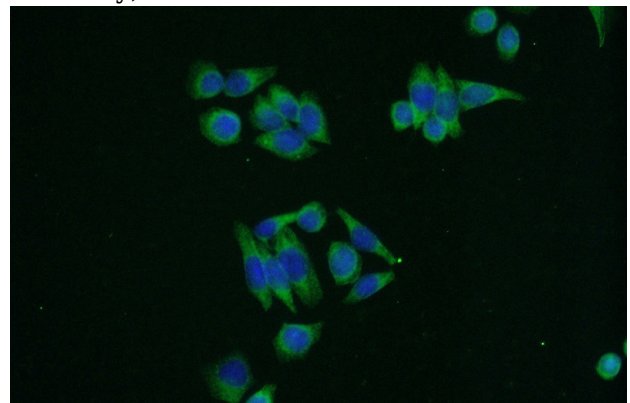
Validations



HeLa cells were subjected to SDS PAGE followed by western blot with Catalog No:115452(SND1 antibody) at dilution of 1:300



Immunohistochemistry of paraffin-embedded human liver slide using Catalog No:115452(SND1 Antibody) at dilution of 1:50



Immunofluorescent analysis of (-20oc Ethanol) fixed HeLa cells using Catalog No:115452(SND1

SND1 antibody



Catalog Number: 115452

Antibody) at dilution of 1:50 and Alexa Fluor 488- conjugated AffiniPure Goat Anti-Rabbit IgG(H+L)