

# Anti-SLAMF8 antibody



Catalog Number: 103452

## Product name

Anti-SLAMF8 antibody

## Immunogen

[Mouse SLAMF8 \(His Tag\) recombinant protein](#)

## Specificity

Mouse SLAMF8

## Antibody description

Rabbit polyclonal to SLAMF8

## Preparation

Produced in rabbits immunized with purified, recombinant Mouse SLAMF8 (rMouse SLAMF8; NP\_083360.2; Met 1-Asp 231). SLAMF8 specific IgG was purified by Mouse SLAMF8 affinity chromatography.

## Formulation

0.2 µm filtered solution in PBS with 5% trehalose

## Storage

This antibody can be stored at 2°C-8°C for one month without detectable loss of activity. Antibody products are stable for twelve months from date of receipt when stored at -20°C to -80°C.

Preservative-Free.

Sodium azide is recommended to avoid contamination (final concentration 0.05%-0.1%). It is toxic to cells and should be disposed of properly. Avoid repeated freeze-thaw cycles.

## Clonality

Polyclonal

## Ig Type

Rabbit IgG

## Applications

ELISA, WB, IHC-P

## Dilutions

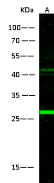
WB: 5-10 µg/ml

ELISA: 0.1-0.2 µg/mL

This antibody can be used at 0.1-0.2 µg/mL with the appropriate secondary reagents to detect Mouse SLAMF8. The detection limit for Mouse SLAMF8 is approximately 0.00245 ng/well.

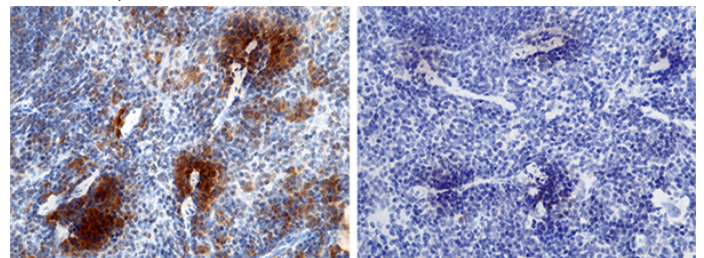
IHC-P: 0.1-1 µg/mL

## Validations



Lanes	A
Items	
Sample (whole cell lysate)	HepG2
Sample Volume (µg/lane)	30
Gel	13% SDS-PAGE reducing gel
Recommended Concentration	5-10 µg/ml
Secondary Antibody	DyLight 800-labeled Antibody To Rabbit IgG (H+L) at 1:5000 dilution
Developed using Odyssey imaging system.	
Explanation	Predicted band size: 32 kDa Observed band size: 27 kDa Additional bands at: 42 kDa (We are unsure as to the identity of these extra bands. They are possible non-specific bindings).

## SLAMF8 Antibody, Rabbit PAb, Antigen Affinity Purified, Western blot



Mouse SLAMF8 Antibody +  
Mouse SLAMF8 Antigen -

## SLAMF8 Antibody, Rabbit PAb, Antigen Affinity Purified, Immunohistochemistry

Immunochemical staining of mouse SLAMF8 in mouse spleen with rabbit polyclonal antibody (1 µg/mL, formalin-fixed paraffin embedded sections). The left panel: tissue incubated with primary antibody; The right panel: tissue incubated with the mixture of primary antibody

# Anti-SLAMF8 antibody



Catalog Number: 103452

---

and antigen (recombinant protein).