

Anti-Phospho-ATP citrate lyase (Thr447+Ser451) Rabbit antibody



Catalog Number: 169052

Product name

Monoclonal

Anti-Phospho-ATP citrate lyase (Thr447+Ser451)
Rabbit antibody

Ig Type

Rabbit IgG

Specificity

Human, Mouse, Rat

Applications

WB

Antibody description

Phospho-ATP citrate lyase (Thr447+Ser451)
Rabbit monoclonal antibody

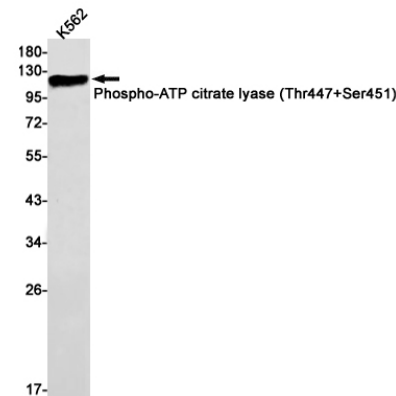
Dilutions

WB: 1/1000

Preparation

Antigen: A synthetic phosphopeptide corresponding to residues surrounding Thr447/Ser451 of human ATP citrate lyase

Validations



Formulation

Supplied in 50nM Tris-Glycine(pH 7.4), 0.15M NaCl, 40%Glycerol, 0.01% sodium azide and 0.05% BSA.

Storage

Store at 4°C short term. Aliquot and store at -20°C long term. Avoid freeze / thaw cycle.

Clonality

Western blot detection of Phospho-ATP citrate lyase (Thr447+Ser451) in K562 cell lysates using Phospho-ATP citrate lyase (Thr447+Ser451) Rabbit mAb(1:1000 diluted). Predicted band size:121kDa.Observed band size:121kDa.