

# Anti-CREG1 antibody



Catalog Number: 142052

## Product name

Anti-CREG1 antibody

## Clonality

Monoclonal

## Immunogen

[Mouse CREG1 \(His Tag\) recombinant protein](#)

## Ig Type

Rabbit IgG

## Specificity

Mouse CREG1

## Applications

ELISA, IHC-P

## Antibody description

Rabbit Monoclonal to Mouse CREG1

## Dilutions

ELISA: 0.1-0.2 µg/ml

## Preparation

This antibody was obtained from a rabbit immunized with purified, recombinant Mouse CREG1 .

This antibody can be used at 0.1-0.2 µg/ml with the appropriate secondary reagents to detect Mouse CREG1.

IHC-P: 1-10 µg/mL

## Formulation

0.2 µm filtered solution in PBS

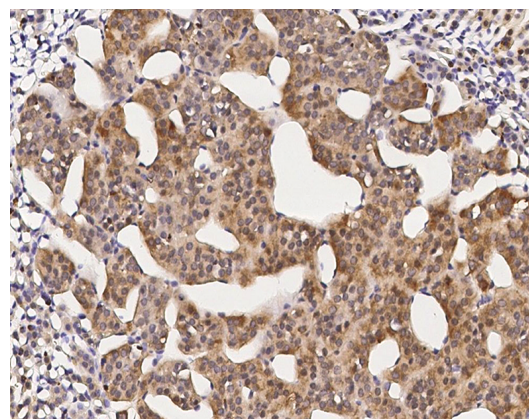
## Validations

## Storage

This antibody can be stored at 2°C-8°C for one month without detectable loss of activity. Antibody products are stable for twelve months from date of receipt when stored at -20°C to -80°C.

Preservative-Free.

Sodium azide is recommended to avoid contamination (final concentration 0.05%-0.1%). It is toxic to cells and should be disposed of properly. Avoid repeated freeze-thaw cycles.



Mouse CREG1 Immunohistochemistry(IHC) 14785