

Anti-HMGCR Rabbit antibody



Catalog Number: 166742

Product name

Anti-HMGCR Rabbit antibody

Specificity

Human, Mouse, Rat

Antibody description

HMGCR Rabbit polyclonal antibody

Preparation

Antigen: A synthetic peptide of human HMGCR

Formulation

Supplied in 50nM Tris-Glycine(pH 7.4), 0.15M NaCl, 40%Glycerol, 0.01% sodium azide and 0.05% BSA.

Storage

Store at -20°C. Stable for 12 months from date of receipt.

Clonality

Polyclonal

Ig Type

Rabbit IgG

Applications

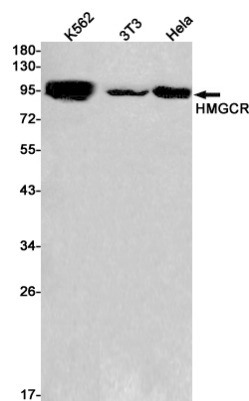
WB, IP

Dilutions

WB: 1/1000

IP: 1/20

Validations



Western blot detection of HMGCR in K562,3T3,HeLa cell lysates using HMGCR Rabbit pAb(1:1000 diluted).Predicted band size:98kDa.Observed band size:98kDa.