

MPG antibody

Catalog Number: 112742

Product name

MPG antibody

Specificity

human, mouse, rat; other species not tested.

Antibody description

MPG Rabbit Polyclonal antibody. Positive WB detected in HepG2 cells. Positive IHC detected in human prostate cancer. Observed molecular weight by Western-blot: 33kd

Preparation

This antibody was obtained by immunization of MPG recombinant protein (Accession Number: NM_001015052). Purification method: Antigen affinity purified.

Formulation

PBS with 0.1% sodium azide and 50% glycerol pH 7.3.

Storage

Store at -20°C. DO NOT ALIQUOT

Clonality

Polyclonal

Ig Type

Rabbit IgG

Applications

ELISA, WB, IHC

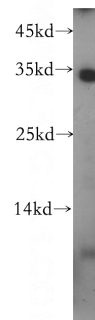
Dilutions

Recommended Dilution:

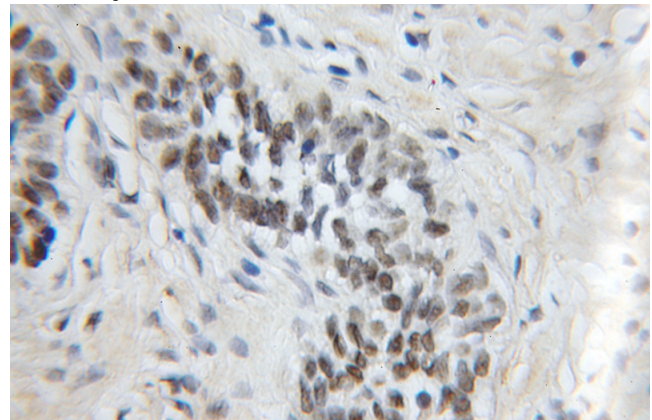
WB: 1:200-1:2000

IHC: 1:20-1:200

Validations



HepG2 cells were subjected to SDS PAGE followed by western blot with Catalog No:112742(MPG antibody) at dilution of 1:100



Immunohistochemical of paraffin-embedded human prostate cancer using Catalog No:112742(MPG antibody) at dilution of 1:50 (under 10x lens)