

ATP1A2 antibody



Catalog Number: 108342

Product name

ATP1A2 antibody

Specificity

Human, Mouse, Rat; other species not tested.

Antibody description

ATP1A2 Rabbit Polyclonal antibody. Positive IHC detected in human skin tissue, human brain tissue, human heart tissue, human kidney tissue, human liver tissue, human testis tissue. Positive IF detected in HeLa cells. Positive FC detected in HeLa cells. Positive WB detected in HEK-293 cells. Observed molecular weight by Western-blot: 97-100 kDa

Preparation

This antibody was obtained by immunization of ATP1A2 recombinant protein (Accession Number: NM_000702). Purification method: Antigen affinity purified.

Formulation

PBS with 0.02% sodium azide and 50% glycerol pH 7.3.

Storage

Store at -20°C. DO NOT ALIQUOT

Clonality

Polyclonal

Ig Type

Rabbit IgG

Applications

ELISA, WB, IHC, IF, FC

Dilutions

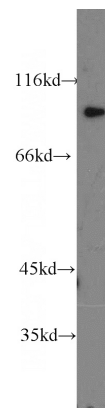
Recommended Dilution:

WB: 1:500-1:5000

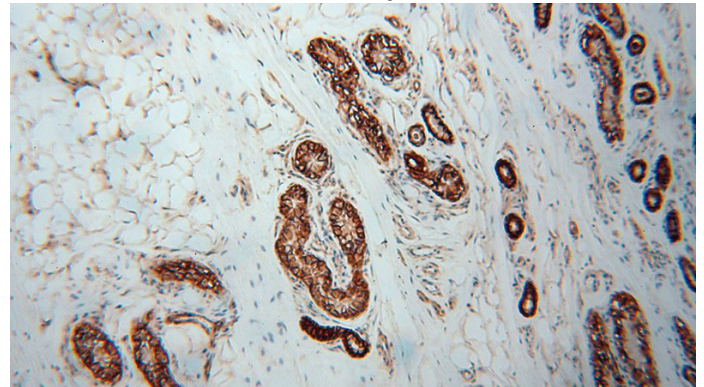
IHC: 1:20-1:200

IF: 1:10-1:100

Validations



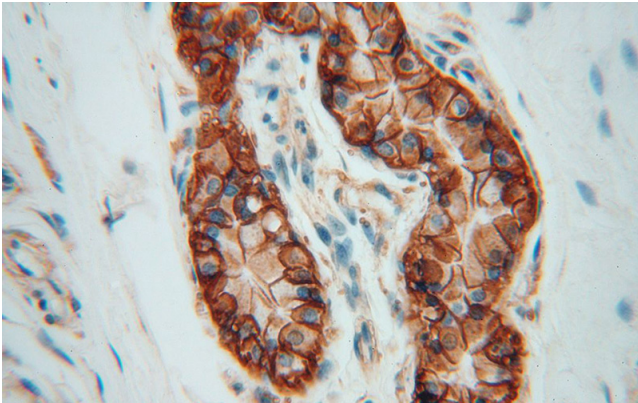
HEK-293 cells were subjected to SDS PAGE followed by western blot with Catalog No:108342(ATP1A2 antibody) at dilution of 1:1200



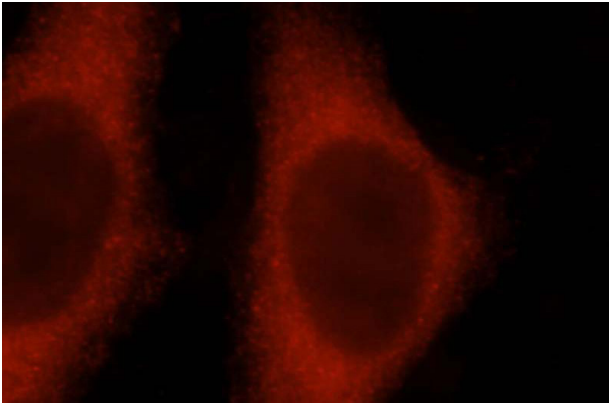
Immunohistochemical of paraffin-embedded human skin using Catalog No:108342(ATP1A2 antibody) at dilution of 1:100 (under 10x lens)

ATP1A2 antibody

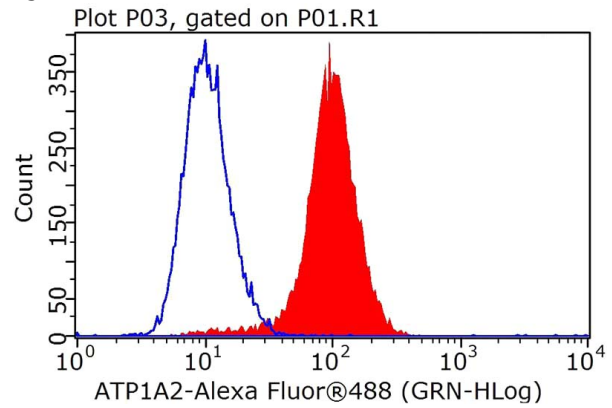
Catalog Number: 108342



Immunohistochemical of paraffin-embedded human skin using Catalog No:108342(ATP1A2 antibody) at dilution of 1:100 (under 40x lens)



Immunofluorescent analysis of HeLa cells, using ATP1A2 antibody Catalog No:108342 at 1:25 dilution and Rhodamine-labeled goat anti-rabbit IgG (red).



1X10⁶ HeLa cells were stained with 0.5ug ATP1A2 antibody (Catalog No:108342, red) and control antibody (blue). Fixed with 4% PFA blocked with 3% BSA (30 min). FITC-Goat anti-Rabbit IgG with dilution 1:100.