

# Anti-RAMP1 Rabbit antibody



Catalog Number: 167342

## Product name

Anti-RAMP1 Rabbit antibody

## Specificity

Human, Mouse, Rat

## Antibody description

RAMP1 Rabbit polyclonal antibody

## Preparation

Antigen: A synthetic peptide of human RAMP1

## Formulation

Supplied in 50nM Tris-Glycine(pH 7.4), 0.15M NaCl, 40%Glycerol, 0.01% sodium azide and 0.05% BSA.

## Storage

Store at -20°C. Stable for 12 months from date of receipt.

## Clonality

Polyclonal

## Ig Type

Rabbit IgG

## Applications

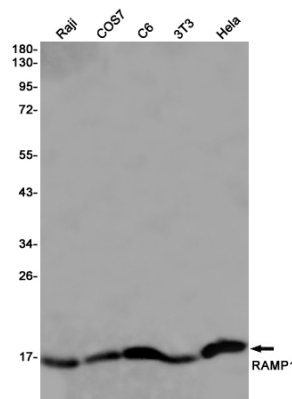
WB, FC

## Dilutions

WB: 1/1000-1/5000

FC: 1/100

## Validations



Western blot detection of RAMP1 in Raji, COS7, C6, 3T3, HeLa cell lysates using RAMP1 Rabbit pAb(1:1000 diluted). Predicted band size: 17KDa. Observed band size: 17KDa.