

NAA60 Polyclonal Antibody



Catalog Number: 165342

Product name

NAA60 Polyclonal Antibody

Specificity

Human, Mouse, Rat

Antibody description

Polyclonal antibody to NAA60

Preparation

Antigen: Recombinant fusion protein containing a sequence corresponding to amino acids 1-242 of human NAA60 (NP_079121.1).

Formulation

PBS with 0.02% sodium azide, 50% glycerol, pH7.3.

Storage

Store at -20°C. Avoid freeze / thaw cycles.

Clonality

Polyclonal

Ig Type

Rabbit IgG

Applications

WB, IHC, IF

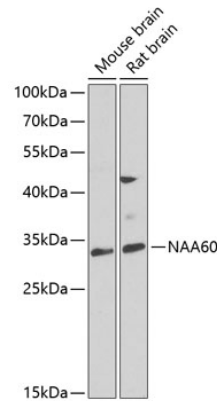
Dilutions

WB 1:500 - 1:2000

IHC 1:50 - 1:200

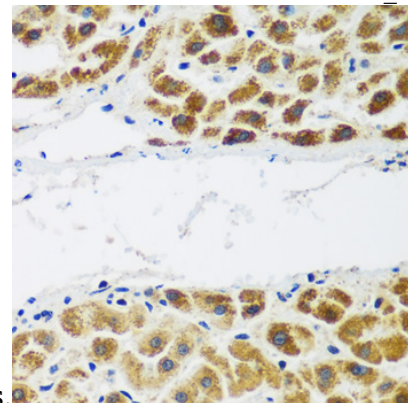
IF 1:50 - 1:200

Validations



Western blot - NAA60 Polyclonal Antibody

Western blot analysis of extracts of various cell lines, using NAA60 antibody at 1:1000 dilution. Secondary antibody: HRP Goat Anti-Rabbit IgG (H+L) at 1:10000 dilution. Lysates/proteins: 25ug per lane. Blocking buffer: 3% nonfat dry milk in TBST. Detection: ECL Enhanced Kit. Exposure



time: 90s.

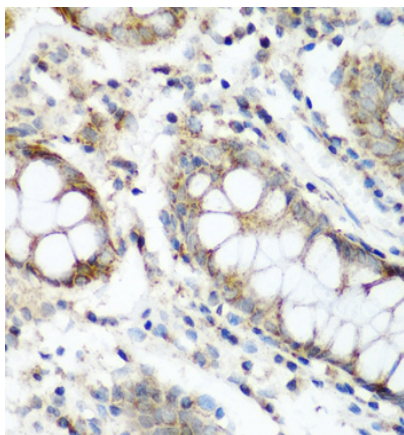
Immunohistochemistry - NAA60 Polyclonal Antibody

Immunohistochemistry of paraffin-embedded human liver cancer using NAA60 antibody at dilution of 1:200 (40x lens).

NAA60 Polyclonal Antibody



Catalog Number: 165342



1:200 (40x lens).

Immunohistochemistry - NAA60 Polyclonal Antibody

Immunohistochemistry of paraffin-embedded human gastric using NAA60 antibody at dilution of 1:200 (40x lens).

Immunohistochemistry - NAA60 Polyclonal Antibody

Immunohistochemistry of paraffin-embedded human colon using NAA60 antibody at dilution of