

# EPAC2 antibody



Catalog Number: 110342

## Product name

EPAC2 antibody

## Specificity

Human, Mouse, Rat; other species not tested.

## Antibody description

EPAC2 Rabbit Polyclonal antibody. Positive WB detected in mouse brain tissue, human cerebellum tissue. Observed molecular weight by Western-blot: 110kd

## Preparation

This antibody was obtained by immunization of EPAC2 recombinant protein (Accession Number: NM\_007023). Purification method: Antigen affinity purified.

## Formulation

PBS with 0.02% sodium azide and 50% glycerol pH 7.3.

## Storage

Store at -20°C. DO NOT ALIQUOT

## Clonality

Polyclonal

## Ig Type

Rabbit IgG

## Applications

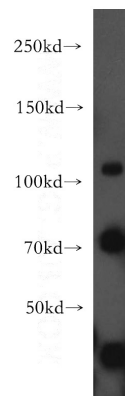
ELISA, WB

## Dilutions

Recommended Dilution:

WB: 1:200-1:2000

## Validations



mouse brain tissue were subjected to SDS PAGE followed by western blot with Catalog No:110342(RAPGEF4 antibody) at dilution of 1:200