

# PSMB5 Polyclonal Antibody



Catalog Number: 163642

## Product name

PSMB5 Polyclonal Antibody

## Specificity

Human, Mouse, Rat

## Antibody description

Polyclonal antibody to PSMB5

## Preparation

Antigen: Recombinant fusion protein containing a sequence corresponding to amino acids 1-263 of human PSMB5 (NP\_002788.1).

## Formulation

PBS with 0.02% sodium azide, 50% glycerol, pH7.3.

## Storage

Store at -20°C. Avoid freeze / thaw cycles.

## Clonality

Polyclonal

## Ig Type

Rabbit IgG

## Applications

WB, IHC, IF, IP

## Dilutions

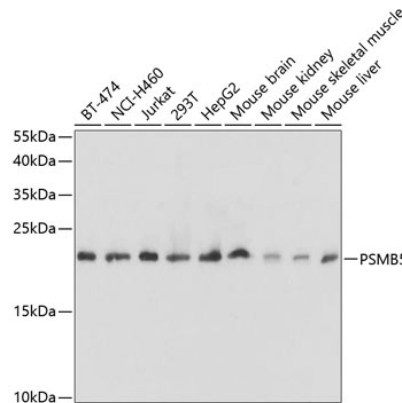
WB 1:500 - 1:2000

IHC 1:50 - 1:200

IF 1:50 - 1:200

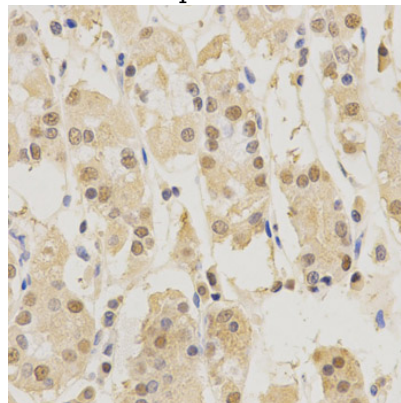
IP 1:50 - 1:100

## Validations



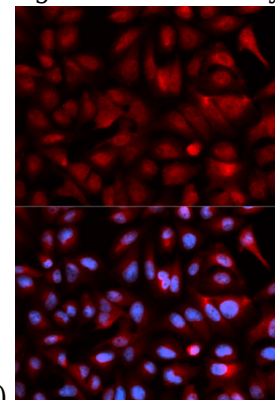
Western blot - PSMB5 Polyclonal Antibody

Western blot analysis of extracts of various cell lines, using PSMB5 antibody at 1:1000 dilution. Secondary antibody: HRP Goat Anti-Rabbit IgG (H+L) at 1:10000 dilution. Lysates/proteins: 25ug per lane. Blocking buffer: 3% nonfat dry milk in TBST. Detection: ECL Basic Kit. Exposure time: 10s.



Immunohistochemistry - PSMB5 Polyclonal Antibody

Immunohistochemistry of paraffin-embedded human stomach using PSMB5 antibody at dilution



of 1:200 (40x lens).

# PSMB5 Polyclonal Antibody



Catalog Number: 163642

---

Immunofluorescence - PSMB5 Polyclonal Antibody

Immunofluorescence analysis of U2OS cells using PSMB5 antibody . Blue: DAPI for nuclear staining.