

ARF1 antibody

Catalog Number: 108242

Product name

ARF1 antibody

WB: 1:200-1:2000

IHC: 1:20-1:200

Specificity

Human, Mouse, Rat, Monkey; other species not tested.

Antibody description

ARF1 Rabbit Polyclonal antibody. Positive IHC detected in human small intestine tissue, human lung cancer tissue, human stomach cancer tissue. Positive WB detected in HeLa cells, COS-7 cells, HEK-293 cells, mouse brain tissue. Observed molecular weight by Western-blot: 21 kDa

Preparation

This antibody was obtained by immunization of ARF1 recombinant protein (Accession Number: NM_001658). Purification method: Antigen affinity purified.

Formulation

PBS with 0.1% sodium azide and 50% glycerol pH 7.3.

Storage

Store at -20°C. DO NOT ALIQUOT

Clonality

Polyclonal

Ig Type

Rabbit IgG

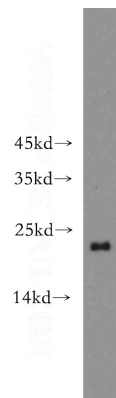
Applications

ELISA, WB, IHC

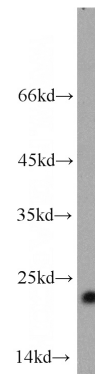
Dilutions

Recommended Dilution:

Validations

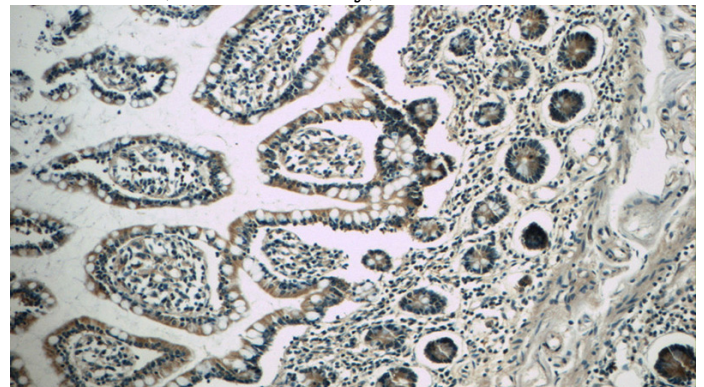


HeLa cells were subjected to SDS PAGE followed by western blot with Catalog No:108242(ARF1



antibody) at dilution of 1:500

mouse brain tissue were subjected to SDS PAGE followed by western blot with Catalog No:108242(ARF1 antibody) at dilution of 1:500

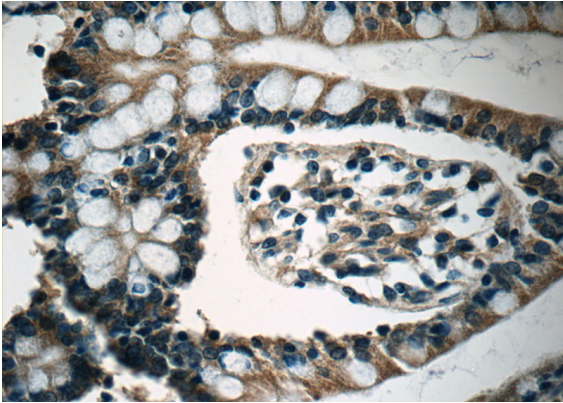


Immunohistochemistry of paraffin-embedded human small intestine tissue slide using Catalog No:108242(ARF1 Antibody) at dilution of 1:50

ARF1 antibody

Catalog Number: 108242

(under 10x lens)



Immunohistochemistry of paraffin-embedded human small intestine tissue slide using Catalog No:108242(ARF1 Antibody) at dilution of 1:50 (under 40x lens)